



CARVER
RESIDENTIAL
Sales · Lettings · Property Management

Reeth, Richmond, DL11 6TX

Offers over £300,000

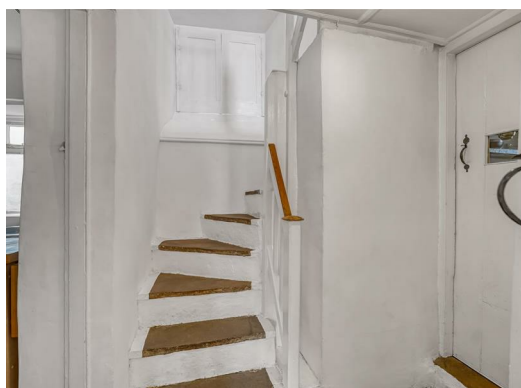
House - Semi-Detached
3 Bedroom/s
1 Bathroom/s

A rare opportunity to buy a much-loved traditional Dales cottage, dating from the mid-eighteenth century, situated in a central but secluded south-facing corner of Reeth, with views across the moors.

Original features throughout including fireplaces, stone flags, and doors. The home briefly comprises a spacious and welcoming living room, with multi-fuel stove set in a magnificent 6ft fireplace, and separate dining room. An inner lobby leads to kitchen, staircase and pantry with original stone cheese shelves. The stairs lead to a bathroom with cast-iron bath, three bedrooms, two double with fireplaces.

This delightful cottage would make an ideal local home or a perfect 'lock and leave' holiday retreat.





- Character Cottage
- Central Reeth location
- Retaining many original period features
- Three bedrooms
- South facing aspect
- No onward chain

GENERAL INFORMATION

Tenure: Freehold

Services: Solid fuel central heating, mains electric, water and drainage.

Local Authority: Richmondshire District Council (Tax Banding B)

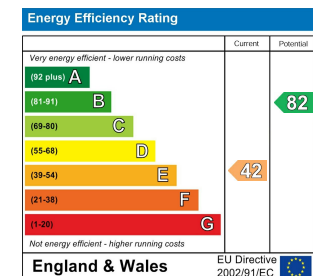


GROUND FLOOR

1ST FLOOR

WESLEY COTTAGE, REETH. DL11 6TX.

Whilst every attempt has been made to ensure the accuracy of the floorplan contained here, measurements of doors, windows, rooms and any other items are approximate and no responsibility is taken for any error, omission or mis-statement. This plan is for illustrative purposes only and should be used as such by any prospective purchaser. The services, systems and appliances shown have not been tested and no guarantee as to their operability or efficiency can be given.
Made with Metropix ©2025



We can search 1,000s of mortgages for you

It could take just 15 minutes with one of our specialist advisers:
Call: 01325 380088. Visit: Any of our Offices. Online: www.mortgageadvicebureau.com/carver



Your home may be repossessed if you do not keep up repayments on your mortgage.
There will be a fee for mortgage advice. The actual amount you pay will depend upon your circumstances.
The fee is up to 1% but a typical fee is 0.3% of the amount borrowed

MAB 6202



These particulars do not constitute any part of an offer or contract. None of the statements contained in these particulars are to be relied on as statements or representations of fact and any intending purchaser must satisfy himself by inspection or otherwise to the correctness of each of the statements contained in these particulars. The vendor does not make or give, and neither Nick & Gordon Carver Residential or Commercial, Nick & Gordon Carver, nor any person in their employment has any authority to make or give any representation or warranty whatever in relation to this property



14 Duke Street, Darlington
Co Durham, DL3 7AA
01325 357807
sales@carvergroup.co.uk

63 Dalton Way, Newton Aycliffe
Co Durham DL5 4NB
01325 320676
aycliffe@carvergroup.co.uk

41 Market Place, Richmond
North Yorkshire, DL10 4QL
01748 825317
richmond@carvergroup.co.uk

219 High Street, Northallerton
North Yorkshire DL7 8LW
01609 777710
northallerton@carvergroup.co.uk

www.carvergroup.co.uk