



**CARVER**  
RESIDENTIAL  
Sales · Lettings · Property Management

Avro Close  
Middleton St. George, Darlington, DL2 1UA  
**Price £210,000**

House - Semi-Detached  
3 Bedroom/s  
2 Bathroom/s



This newer build three bedroom semi detached home is ideal for first time buyer or investors alike. Situated in the village of Middleton St George and close to commuter networks the property is ideally situated for access to larger towns whilst still being close to rural walks and countryside pursuits. Internal accommodation over three floors consists of an entrance hallway, living room, kitchen breakfast room and ground floor WC to the ground floor, two bedrooms and bathroom to the first floor and main bedroom with en-suite shower room to the second floor. Externally the property offers off street parking for two cars and a private lawned rear garden with patio areas. Finished to a modern standard with UPVC double glazing throughout the property is ready to enjoy. EPC rating B, Darlington Borough Council tax band C.







- Village Location
- Accommodation Over Three Floors
- Two Bathrooms
- Newer Build Property
- Three Bedrooms
- Off Street Parking

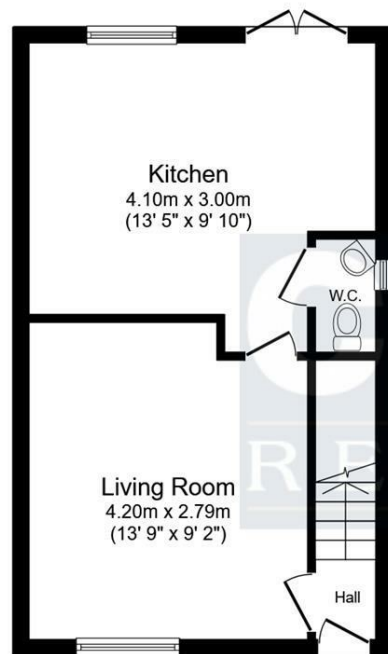
#### GENERAL INFORMATION

Tenure: Freehold

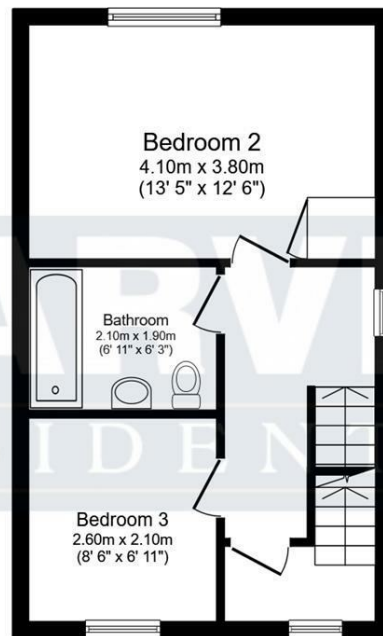
Services: Gas central heating, mains electric, water and drainage.

Double glazing

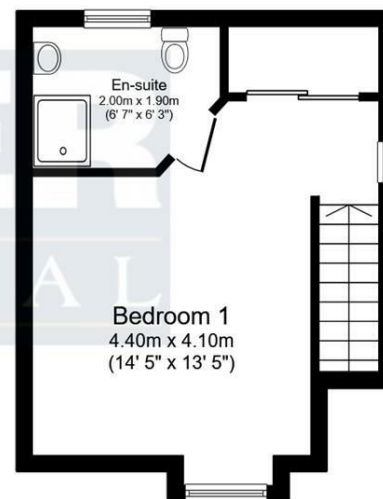
Local Authority: Darlington Borough Council (Tax Banding C)



**Ground Floor**  
Floor area 36.2 sq.m. (390 sq.ft.)



**First Floor**  
Floor area 36.2 sq.m. (390 sq.ft.)



**Second Floor**  
Floor area 25.5 sq.m. (275 sq.ft.)

**Total floor area: 98.0 sq.m. (1,055 sq.ft.)**

This floor plan is for illustrative purposes only. It is not drawn to scale. Any measurements, floor areas (including any total floor area), openings and orientations are approximate. No details are guaranteed, they cannot be relied upon for any purpose and do not form any part of any agreement. No liability is taken for any error, omission or misstatement. A party must rely upon its own inspection(s). Powered by [www.Propertybox.io](http://www.Propertybox.io)

Energy Efficiency Rating		
Current		Potential
Very energy efficient - lower running costs		
(92 plus) <b>A</b>		<b>84</b>
(81-91) <b>B</b>		
(69-80) <b>C</b>		<b>96</b>
(55-68) <b>D</b>		
(39-54) <b>E</b>		
(21-38) <b>F</b>		
(1-20) <b>G</b>		
Not energy efficient - higher running costs		
<b>England &amp; Wales</b>		EU Directive 2002/91/EC

**We can search 1,000s of mortgages for you**

It could take just 15 minutes with one of our specialist advisers:  
Call: 01325 380088. Visit: Any of our Offices. Online: [www.mortgageadvicebureau.com/carver](http://www.mortgageadvicebureau.com/carver)



Your home may be repossessed if you do not keep up repayments on your mortgage.  
There will be a fee for mortgage advice. The actual amount you pay will depend upon your circumstances.  
The fee is up to 1% but a typical fee is 0.3% of the amount borrowed

MAB 6202



These particulars do not constitute any part of an offer or contract. None of the statements contained in these particulars are to be relied on as statements or representations of fact and any intending purchaser must satisfy himself by inspection or otherwise to the correctness of each of the statements contained in these particulars. The vendor does not make or give, and neither Nick & Gordon Carver Residential or Commercial, Nick & Gordon Carver, nor any person in their employment has any authority to make or give any representation or warranty whatever in relation to this property



**14 Duke Street, Darlington**  
**Co Durham, DL3 7AA**  
**01325 357807**  
**[sales@carvergroup.co.uk](mailto:sales@carvergroup.co.uk)**

**63 Dalton Way, Newton Aycliffe**  
**Co Durham DL5 4NB**  
**01325 320676**  
**[aycliffe@carvergroup.co.uk](mailto:aycliffe@carvergroup.co.uk)**

**41 Market Place, Richmond**  
**North Yorkshire, DL10 4QL**  
**01748 825317**  
**[richmond@carvergroup.co.uk](mailto:richmond@carvergroup.co.uk)**

**219 High Street, Northallerton**  
**North Yorkshire DL7 8LW**  
**01609 777710**  
**[northallerton@carvergroup.co.uk](mailto:northallerton@carvergroup.co.uk)**

**[www.carvergroup.co.uk](http://www.carvergroup.co.uk)**