



CARVER
RESIDENTIAL
Sales · Lettings · Property Management

Bede Crescent
Newton Aycliffe, DL5 5HB

Offers in the region of £109,950

House - Terraced
2 Bedroom/s
1 Bathroom/s

This delightful end-terraced house presents an excellent opportunity for first-time buyers or those looking to downsize.

The living room features French doors that open directly into the enclosed garden, creating a seamless connection between indoor and outdoor living. The kitchen and dining room are thoughtfully combined, providing a perfect setting for family meals and entertaining guests.

The property comprises 2 generously sized double bedrooms, ensuring ample space for relaxation and rest. The shower room/WC, adds to the convenience of this lovely home.

Outside, the enclosed garden offers a private retreat, ideal for enjoying sunny afternoons or hosting barbecues with friends and family. Additionally, the driveway provides parking, a valuable asset in today's busy world.

This charming terraced house is not only a wonderful starter home but also a perfect choice for those seeking to downsize without compromising on comfort or style. With its appealing features and prime location, this property is sure to attract interest. Do not miss the chance to make this lovely house your new home.





Agents Notes

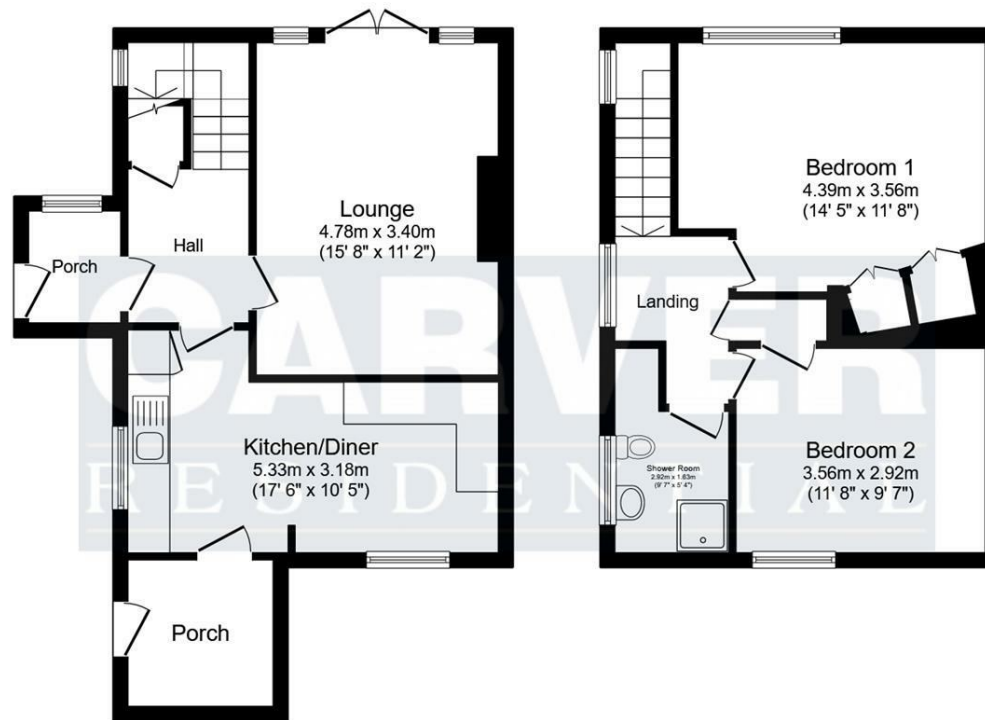
Tenure:- Freehold

Mains gas, (central heating to radiators), electricity & drainage

uPVC double glazing throughout

Council Tax:- Band A

Local Authority:- Durham County Council

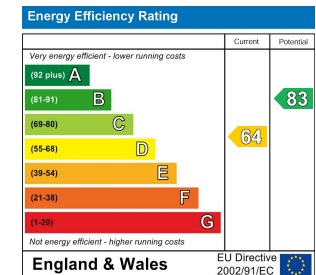


Ground Floor
Floor area 45.3 sq.m. (488 sq.ft.)

First Floor
Floor area 38.5 sq.m. (414 sq.ft.)

TOTAL: 83.8 sq.m. (902 sq.ft.)

This floor plan is for illustrative purposes only. It is not drawn to scale. Any measurements, floor areas (including any total floor area), openings and orientations are approximate. No details are guaranteed, they cannot be relied upon for any purpose and do not form any part of any agreement. No liability is taken for any error, omission or misstatement. A party must rely upon its own inspection(s). Powered by www.Propertybox.io



We can search 1,000s of mortgages for you

It could take just 15 minutes with one of our specialist advisers:
Call: 01325 380088. Visit: Any of our Offices. Online: www.mortgageadvicebureau.com/carver



Your home may be repossessed if you do not keep up repayments on your mortgage. There will be a fee for mortgage advice. The actual amount you pay will depend upon your circumstances. The fee is up to 1% but a typical fee is 0.3% of the amount borrowed

MAB 6202



These particulars do not constitute any part of an offer or contract. None of the statements contained in these particulars are to be relied on as statements or representations of fact and any intending purchaser must satisfy himself by inspection or otherwise to the correctness of each of the statements contained in these particulars. The vendor does not make or give, and neither Nick & Gordon Carver Residential or Commercial, Nick & Gordon Carver, nor any person in their employment has any authority to make or give any representation or warranty whatever in relation to this property



14 Duke Street, Darlington
County Durham, DL3 7AA
Tel: 01325 357807
sales@carvergroup.co.uk

26 Market Place, Richmond
North Yorkshire, DL10 4QG
Tel: 01748 825317
richmond@carvergroup.co.uk

43 Dalton Way, Newton Aycliffe
County Durham, DL5 4DJ
Tel: 01325 320676
aycliffe@carvergroup.co.uk

219 High Street, Northallerton
North Yorkshire, DL7 8LW
Tel: 01609 777710
northallerton@carvergroup.co.uk

www.carvergroup.co.uk