



CARVER
RESIDENTIAL
Sales · Lettings · Property Management

The Post Horn,
Newton Aycliffe, DL5 7LU

Offers in the region of £295,000

House - Detached
4 Bedroom/s
2 Bathroom/s

Occupying a large CORNER PLOT within a lovely cul-de-sac this significantly EXTENDED detached family home must be viewed to be appreciated. The property has been extensively refurbished to a particularly high standard throughout and is sold with a large high quality summerhouse which is currently used as a games room and bar. An internal viewing will reveal an entrance hallway with ground floor WC, living room, fabulous modern fitted kitchen with central island and a host of integrated appliances and a utility room. In addition there is a large open plan dining/family room to the side of the property overlooking the garden and enjoying a good degree of privacy. The first floor includes a generously proportioned principal bedroom with built-in wardrobes and en-suite shower room/WC. There are three further bedrooms and a luxuriously appointed family bathroom/WC with separate shower. Externally there is an extensive driveway to the front of the property with attached DOUBLE GARAGE.





- Detached family home occupying generous corner plot
- Large open plan dining/family room with bi-fold doors
- Generously proportioned principal bedroom with en-suite shower room/WC
- Improved throughout to an exceptionally high standard
- Attached double garage
- Significantly extended
- Luxurious fitted kitchen with utility room
- Fabulous family bathroom/WC with separate corner shower cubicle
- 4-car driveway
- Large summerhouse currently used as a games room and bar

Agents Notes

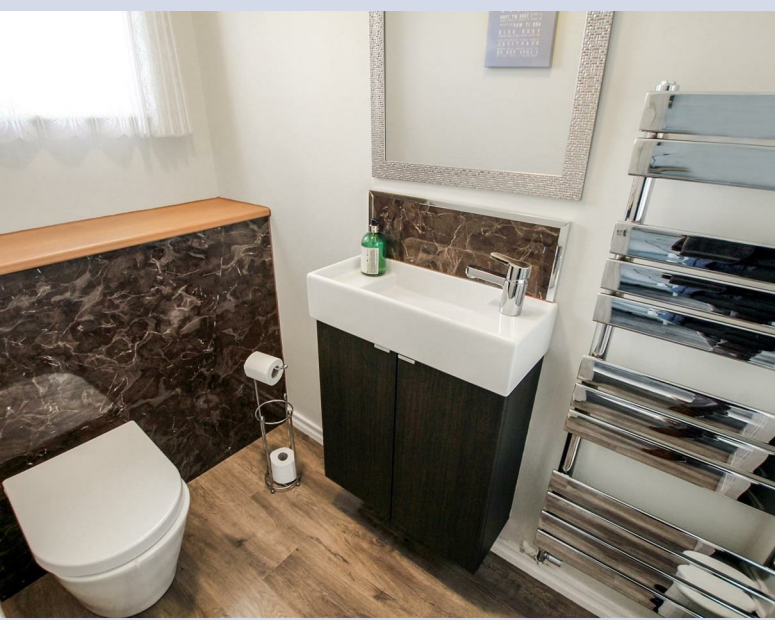
Tenure:- Freehold

Mains gas, (central heating to radiators), electricity & drainage

uPVC double glazing throughout

Council Tax:- Band D

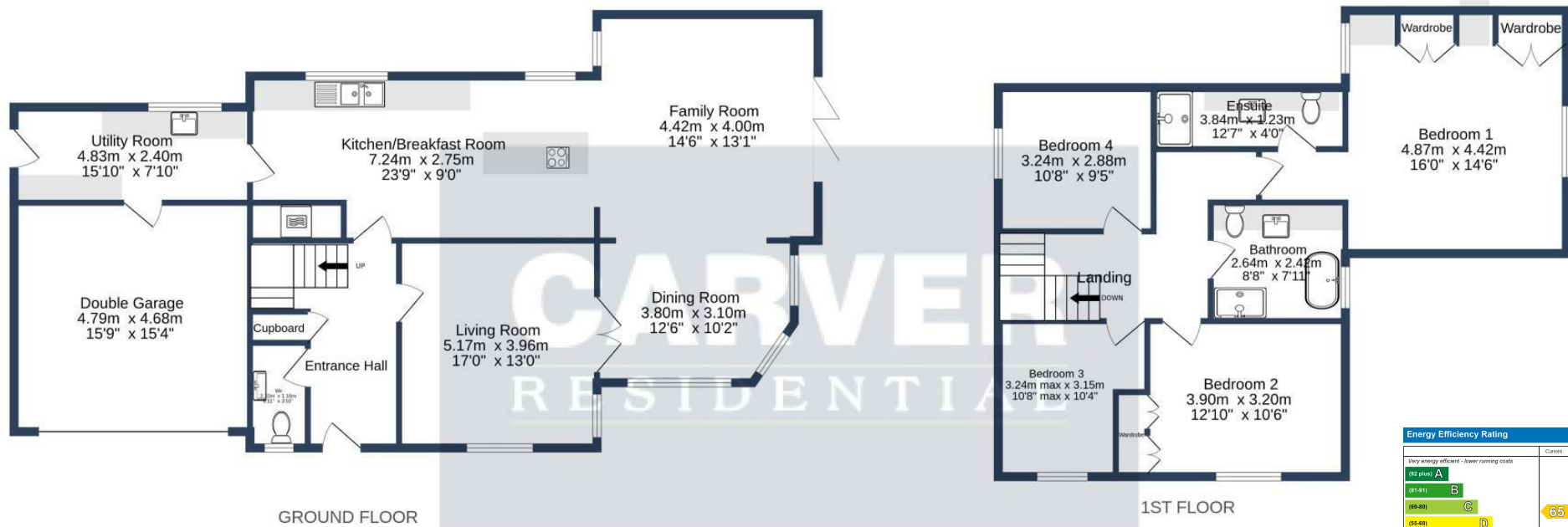
Local Authority:- Durham County Council





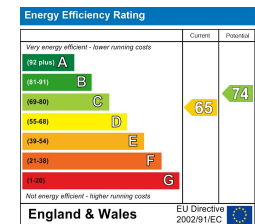






THE POST HORN, NEWTON AYCLIFFE. DL5 7LU.

Whilst every attempt has been made to ensure the accuracy of the floorplan contained here, measurements of doors, windows, rooms and any other items are approximate and no responsibility is taken for any error, omission or mis-statement. This plan is for illustrative purposes only and should be used as such by any prospective purchaser. The services, systems and appliances shown have not been tested and no guarantee as to their operability or efficiency can be given.
Made with Metropix ©2025



We can search 1,000s of mortgages for you

It could take just 15 minutes with one of our specialist advisers:
Call: 01325 380088. Visit: Any of our Offices. Online: www.mortgageadvicebureau.com/carver



Your home may be repossessed if you do not keep up repayments on your mortgage. There will be a fee for mortgage advice. The actual amount you pay will depend upon your circumstances. The fee is up to 1% but a typical fee is 0.3% of the amount borrowed

MAB 6202



These particulars do not constitute any part of an offer or contract. None of the statements contained in these particulars are to be relied on as statements or representations of fact and any intending purchaser must satisfy himself by inspection or otherwise to the correctness of each of the statements contained in these particulars. The vendor does not make or give, and neither Nick & Gordon Carver Residential or Commercial, Nick & Gordon Carver, nor any person in their employment has any authority to make or give any representation or warranty whatever in relation to this property

naea
propertymark

PROTECTED



14 Duke Street, Darlington
County Durham, DL3 7AA
Tel: 01325 357807
sales@carvergroup.co.uk

26 Market Place, Richmond
North Yorkshire, DL10 4QG
Tel: 01748 825317
richmond@carvergroup.co.uk

43 Dalton Way, Newton Aycliffe
County Durham, DL5 4DJ
Tel: 01325 320676
aycliffe@carvergroup.co.uk

219 High Street, Northallerton
North Yorkshire, DL7 8LW
Tel: 01609 777710
northallerton@carvergroup.co.uk

www.carvergroup.co.uk