



**CARVER**  
RESIDENTIAL  
Sales · Lettings · Property Management

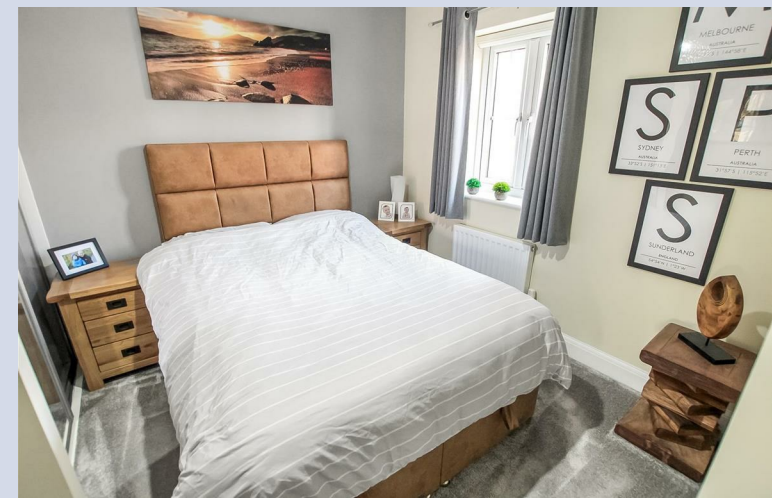
Spindleberry Way  
School Aycliffe, DL5 6GS

**Offers in the region of £185,000**

House - Semi-Detached  
3 Bedroom/s  
2 Bathroom/s



A beautifully presented SEMI-DETACHED property, not overlooked to the front or rear, pleasantly situated on this popular development close to Heighington, Newton Aycliffe, Darlington and the A1(M). An internal viewing will reveal an entrance hallway, ground floor WC, fitted kitchen with integrated appliances and a lovely lounge/dining room with French doors opening to the rear garden. The first floor features a principal bedroom with en-suite shower room/WC, two further bedrooms and a family bathroom/WC. Externally there is a block paved driveway extending to the side of the property with EV charge point and attractive enclosed gardens to the rear with garden shed and external tap. The property also benefits from the remaining balance of the original builders NHBC warranty, (expires January 2029).







### Agents Notes

Tenure:- Freehold

Mains gas, (central heating to radiators / boiler serviced November 2024), electricity & drainage

uPVC double glazing throughout

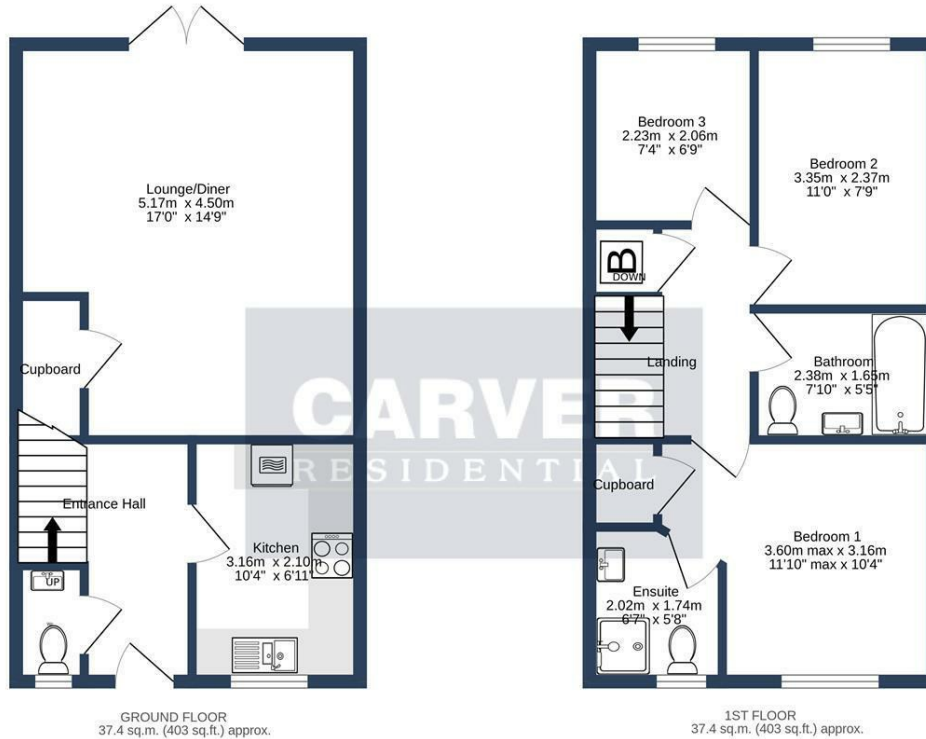
Council Tax:- Band C

Local Authority:- Darlington Borough Council

Charge of approximately £11.00pcm to contribute towards communal areas on development

Curtains, blinds & dishwasher included

Potential of no onward chain



SPINDELBERRY WAY, SCHOOL AYCLIFFE, DL5 6GS.

TOTAL FLOOR AREA : 74.8 sq.m. (805 sq.ft.) approx.

Whilst every attempt has been made to ensure the accuracy of the floorplan contained here, measurements of doors, windows, rooms and any other items are approximate and no responsibility is taken for any error, omission or mis-statement. This plan is for illustrative purposes only and should be used as such by any prospective purchaser. The services, systems and appliances shown have not been tested and no guarantee as to their operability or efficiency can be given.  
Made with Metropix ©2024

Energy Efficiency Rating		Current	Potential
Very energy efficient - lower running costs			
(92 plus) <b>A</b>		<b>84</b>	<b>96</b>
(81-91) <b>B</b>			
(69-80) <b>C</b>			
(55-68) <b>D</b>			
(39-54) <b>E</b>			
(21-38) <b>F</b>			
(1-20) <b>G</b>			
Not energy efficient - higher running costs			
<b>England &amp; Wales</b>		EU Directive 2002/91/EC	

**We can search 1,000s of mortgages for you**

It could take just 15 minutes with one of our specialist advisers:  
Call: 01325 380088. Visit: Any of our Offices. Online: [www.mortgageadvicebureau.com/carver](http://www.mortgageadvicebureau.com/carver)



Your home may be repossessed if you do not keep up repayments on your mortgage. There will be a fee for mortgage advice. The actual amount you pay will depend upon your circumstances. The fee is up to 1% but a typical fee is 0.3% of the amount borrowed

MAB 6202



These particulars do not constitute any part of an offer or contract. None of the statements contained in these particulars are to be relied on as statements or representations of fact and any intending purchaser must satisfy himself by inspection or otherwise to the correctness of each of the statements contained in these particulars. The vendor does not make or give, and neither Nick & Gordon Carver Residential or Commercial, Nick & Gordon Carver, nor any person in their employment has any authority to make or give any representation or warranty whatever in relation to this property



14 Duke Street, Darlington  
County Durham, DL3 7AA  
Tel: 01325 357807  
[sales@carvergroup.co.uk](mailto:sales@carvergroup.co.uk)

26 Market Place, Richmond  
North Yorkshire, DL10 4QG  
Tel: 01748 825317  
[richmond@carvergroup.co.uk](mailto:richmond@carvergroup.co.uk)

43 Dalton Way, Newton Aycliffe  
County Durham, DL5 4DJ  
Tel: 01325 320676  
[aycliffe@carvergroup.co.uk](mailto:aycliffe@carvergroup.co.uk)

219 High Street, Northallerton  
North Yorkshire, DL7 8LW  
Tel: 01609 777710  
[northallerton@carvergroup.co.uk](mailto:northallerton@carvergroup.co.uk)

[www.carvergroup.co.uk](http://www.carvergroup.co.uk)