

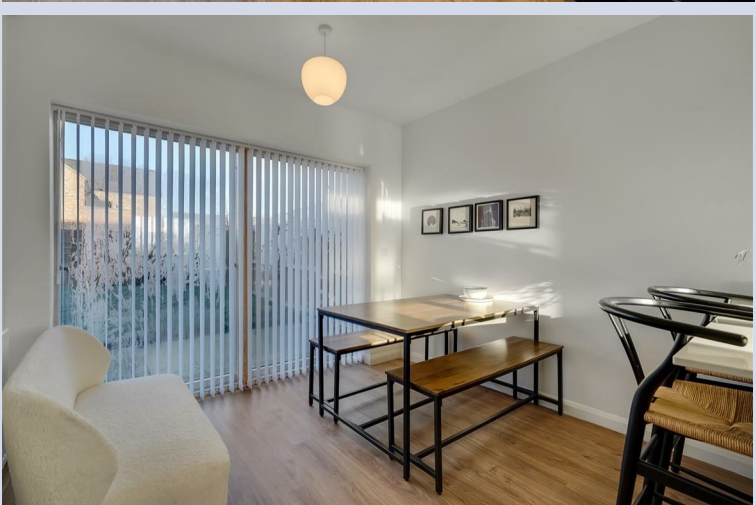


**CARVER**  
RESIDENTIAL  
Sales · Lettings · Property Management

77, Yarm Road,  
Middleton St George, Darlington, DL2 1FX  
**Offers in the region of £325,000**

House - Detached  
4 Bedroom/s  
2 Bathroom/s

The Rowan is a stunning property with high ceilings, oversized roof lights and large floor to ceiling windows which increase natural light, creating a sense of space and openness throughout the property's generous accommodation. Viewing will reveal a welcoming hall way, with under stairs utility cupboard and separate WC as well as access to the integral garage. There is a kitchen with integrated appliances and breakfast bar and dining area with sliding doors to the rear garden. There are two double bedrooms with a house bathroom. To the second floor there are two further generous double bedrooms with built in storage cupboards and the main bedroom having an ensuite. Externally there are front and rear gardens and a driveway to the rear with garage. The ground floor features an open plan family kitchen and dining room across the hallway is access to the store (with in built space for utility area) and downstairs W.C. To the first floor is a living room with an oversized south facing window draws the light into this generous multi-use area. A family bathroom and two bedrooms are also accessed from a sizable landing area. The top floor contains two expansive bedrooms running front to back, with south facing floor to ceiling dormer windows at one end and oversized Velux roof and wall lights to the other. Both bedrooms feature walk-in wardrobes and the main bedroom contains a luxury ensuite.





- SPACIOUS FAMILY HOME
- VIEWING ESSENTIAL
- GRAND MAIN BEDROOM WITH ENSUITE
- BEAUTIFULLY PRESENTED
- FULL HEIGHT WINDOWS
- PARKING AND GARAGE (CURRENTLY STORE)

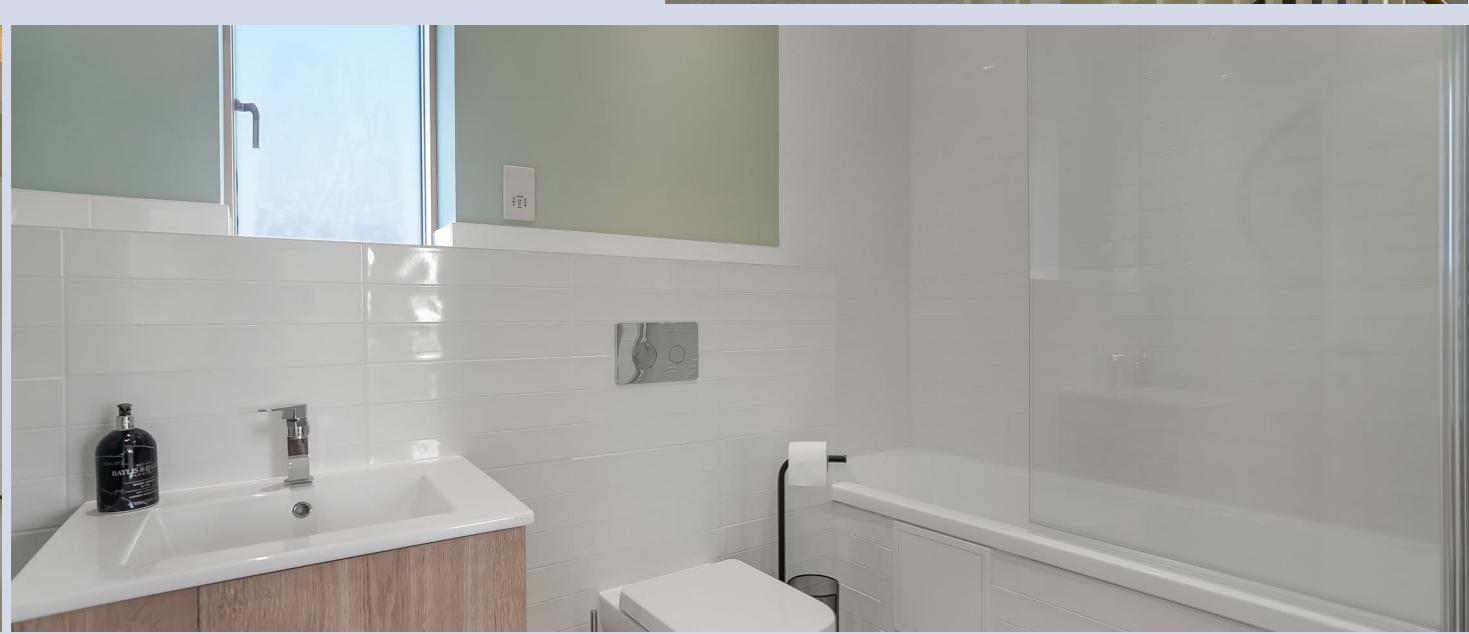
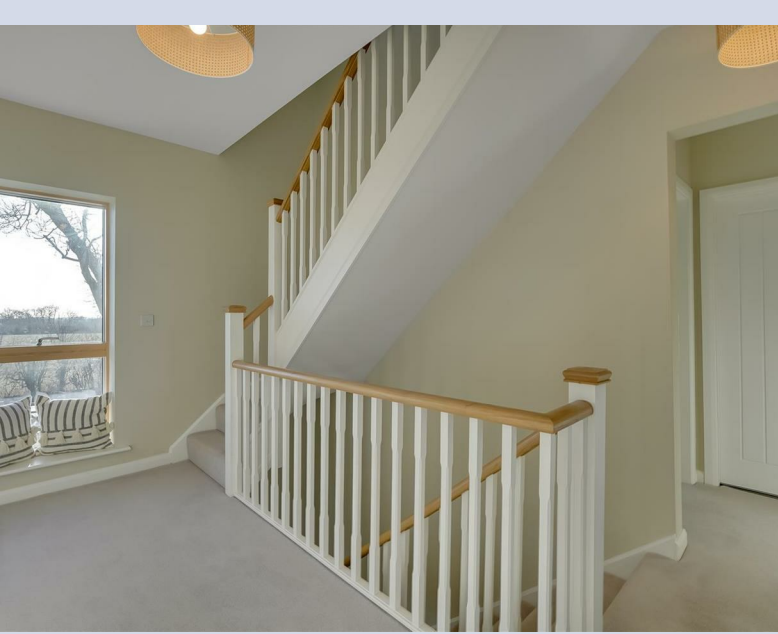
**GENERAL INFORMATION:**

Tenure: Freehold

Services: Gas central heating, mains electric, water and drainage.

Double glazing

Local Authority: Darlington Borough Council (Tax Banding F)











Energy Efficiency Rating		Current	Potential
Very energy efficient - lower running costs			
(92-100)	A	84	91
(81-91)	B		
(69-80)	C		
(55-68)	D		
(39-54)	E		
(21-38)	F		
(1-20)	G		
Not energy efficient - higher running costs			
England & Wales		EU Directive 2002/91/EC	

CARVER RESIDENTIAL

Total area: approx. 149.3 sq. metres (1607.5 sq. feet)  
 For identification purposes only. Not to scale.  
 Plan produced using PlanUp.

We can search 1,000s of mortgages for you

It could take just 15 minutes with one of our specialist advisers:  
 Call: 01325 380088. Visit: Any of our Offices. Online: [www.mortgageadvicebureau.com/carver](http://www.mortgageadvicebureau.com/carver)



Your home may be repossessed if you do not keep up repayments on your mortgage. There will be a fee for mortgage advice. The actual amount you pay will depend upon your circumstances. The fee is up to 1% but a typical fee is 0.3% of the amount borrowed

MAB 6202



These particulars do not constitute any part of an offer or contract. None of the statements contained in these particulars are to be relied on as statements or representations of fact and any intending purchaser must satisfy himself by inspection or otherwise to the correctness of each of the statements contained in these particulars. The vendor does not make or give, and neither Nick & Gordon Carver Residential or Commercial, Nick & Gordon Carver, nor any person in their employment has any authority to make or give any representation or warranty whatever in relation to this property



14 Duke Street, Darlington  
 Co Durham, DL3 7AA  
 01325 357807  
[sales@carvergroup.co.uk](mailto:sales@carvergroup.co.uk)

43 Dalton Way, Newton Aycliffe  
 Co Durham DL5 4DJ  
 01325 320676  
[aycliffe@carvergroup.co.uk](mailto:aycliffe@carvergroup.co.uk)

41 Market Place, Richmond  
 North Yorkshire, DL10 4QL  
 01748 825317  
[richmond@carvergroup.co.uk](mailto:richmond@carvergroup.co.uk)

219 High Street, Northallerton  
 North Yorkshire DL7 8LW  
 01609 777710  
[northallerton@carvergroup.co.uk](mailto:northallerton@carvergroup.co.uk)