



**CARVER**  
RESIDENTIAL  
Sales · Lettings · Property Management

Arden Court  
Northallerton, DL6 1EW

**Offers in the region of £72,000**

Flat - Retirement  
1 Bedroom/s  
1 Bathroom/s

A spacious and well presented one double bed roomed 2nd floor apartment which can be accessed via a lift or stairs and is situated within a purpose built retirement development. The apartment benefits from electric heating and double glazing. The accommodation includes an entrance hall with large walk in cupboard, spacious living room / dining room enjoying a lovely outlook and archway leads to a modern fitted kitchen. The bathroom is fitted with a matching suite with low level bath with shower over. The bedroom is a double room with built in wardrobes. There is a communal residents lounge, laundry room and a development manager. Externally there are communal gardens and private residents parking. The property is situated within easy reach of Northallerton High Street.





- One double bedroomed 2nd floor apartment
- Spacious living room / dining room
- Fitted bathroom with shower over the low level bath
- Communal residents lounge and laundry room
- Easy reach of Northallerton High Street
- Well presented living accommodation
- Modern fitted kitchen with integrated oven and hob
- Purpose built retirement property with development site manager
- Communal gardens and private residents parking

#### GENERAL INFORMATION

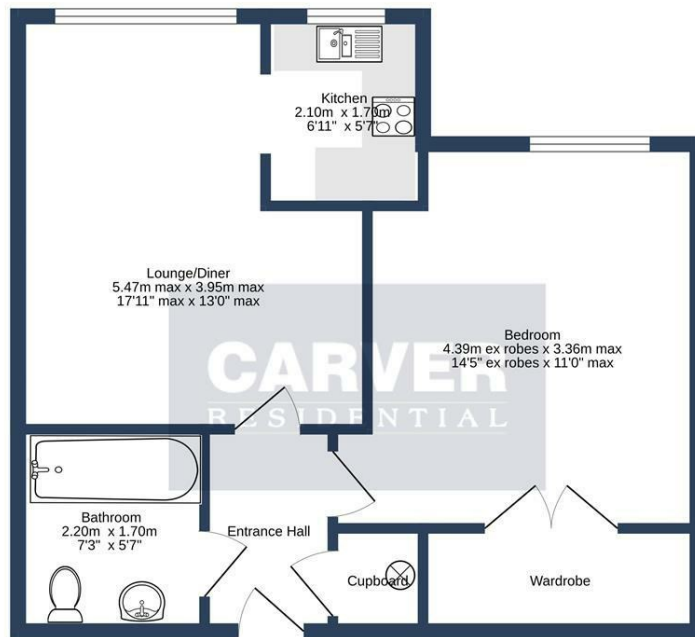
Tenure: Leasehold. 125 year lease from 1st July 1989. Service charge £1280.51 paid every six months and Ground rent £235.52 paid every six months

Services: Electric heating, mains electric, water and drainage.

Double glazing

Local Authority: North Yorkshire Band B

Occupancy age restriction - 60yr or over for main owner & 55yr or over for partner.



SECOND FLOOR

ARDEN COURT, NORTHALLERTON, DL6 1EW.

Whilst every attempt has been made to ensure the accuracy of the floorplan contained here, measurements of doors, windows, rooms and any other items are approximate and no responsibility is taken for any error, omission or mis-statement. This plan is for illustrative purposes only and should be used as such for any prospective purchase. The services, systems and appliances shown have not been tested and no guarantee as to their operability or efficiency can be given. Made with Metropix ©2024

Energy Efficiency Rating		
	Current	Potential
Very energy efficient - lower running costs		
(92 plus) <b>A</b>		
(81-91) <b>B</b>		
(69-80) <b>C</b>		
(55-68) <b>D</b>		
(39-54) <b>E</b>		
(21-38) <b>F</b>		
(1-20) <b>G</b>		
Not energy efficient - higher running costs		
<b>England &amp; Wales</b>	EU Directive 2002/91/EC	

We can search 1,000s of mortgages for you

It could take just 15 minutes with one of our specialist advisers:  
 Call: 01325 380088. Visit: Any of our Offices. Online: [www.mortgageadvicebureau.com/carver](http://www.mortgageadvicebureau.com/carver)



Your home may be repossessed if you do not keep up repayments on your mortgage. There will be a fee for mortgage advice. The actual amount you pay will depend upon your circumstances. The fee is up to 1% but a typical fee is 0.3% of the amount borrowed

MAB 6202



These particulars do not constitute any part of an offer or contract. None of the statements contained in these particulars are to be relied on as statements or representations of fact and any intending purchaser must satisfy himself by inspection or otherwise to the correctness of each of the statements contained in these particulars. The vendor does not make or give, and neither Nick & Gordon Carver Residential or Commercial, Nick & Gordon Carver, nor any person in their employment has any authority to make or give any representation or warranty whatever in relation to this property



14 Duke Street, Darlington  
 Co Durham, DL3 7AA  
 01325 357807  
[sales@carvergroup.co.uk](mailto:sales@carvergroup.co.uk)

43 Dalton Way, Newton Aycliffe  
 Co Durham DL5 4DJ  
 01325 320676  
[aycliffe@carvergroup.co.uk](mailto:aycliffe@carvergroup.co.uk)

41 Market Place, Richmond  
 North Yorkshire, DL10 4QL  
 01748 825317  
[richmond@carvergroup.co.uk](mailto:richmond@carvergroup.co.uk)

219 High Street, Northallerton  
 North Yorkshire DL7 8LW  
 01609 777710  
[northallerton@carvergroup.co.uk](mailto:northallerton@carvergroup.co.uk)