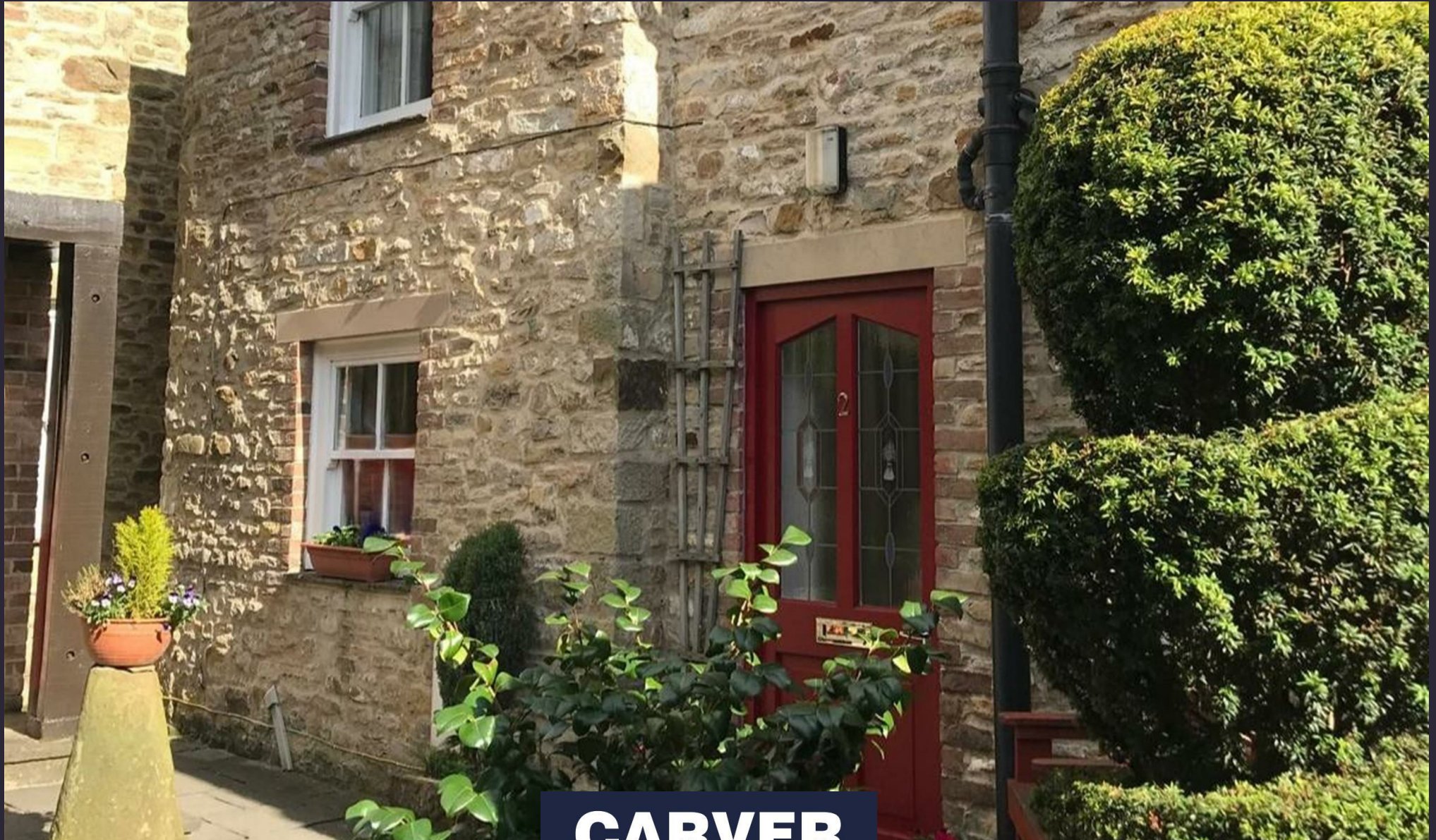


Newbiggin, Richmond DL10 4DT

Price £140,000



CARVER

RESIDENTIAL

Sales · Lettings · Property Management

2 Victoria Stable Yard is set in an enviable position within a quiet courtyard development in Richmond Town Centre. The property is approached through a gated entrance in to a communal court yard, the small development consists of a number of cottages and apartments around well planted garden borders.

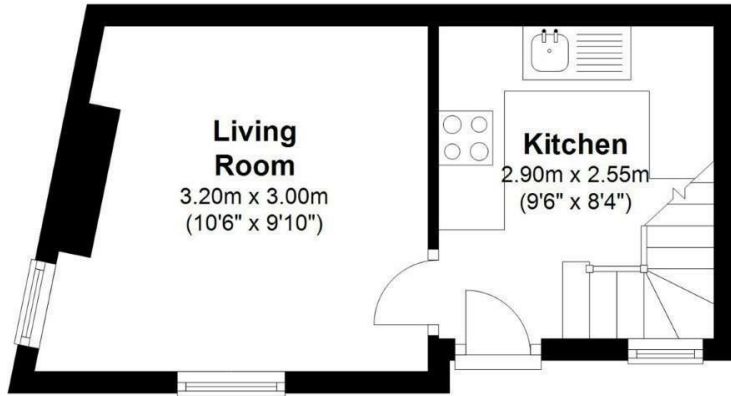
The property has an abundance of charm and in brief comprises of a lounge, a modern and contemporary kitchen/ dining area with a range of white gloss floor and wall units, an electric oven/grill and gas hob, washing machine and fridge/freezer, with stairs leading to the first floor where you will find a double bedroom and bathroom.

There is no parking with the cottage, however resident permit parking is available on Newbiggin, please contact Richmondshire District Council on , for further information.

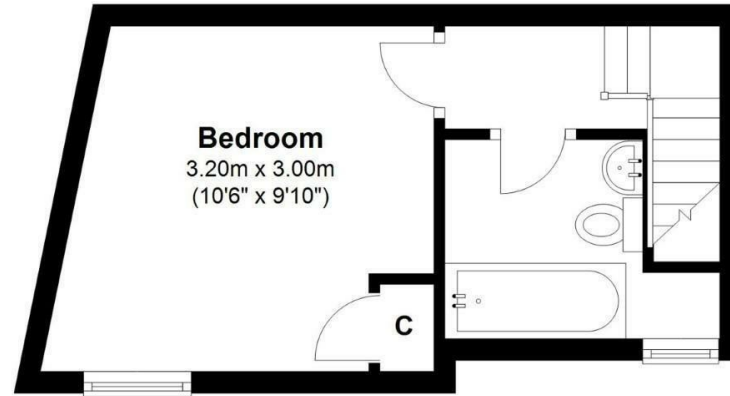




Victoria Stable Yard Newbiggin, Richmond



Ground Floor



First Floor

