



**CARVER**  
RESIDENTIAL  
Sales · Lettings · Property Management

17, Woodlands Way,  
Hurworth Place, Darlington, DL2 2HQ  
**Asking price £230,000**

House - Semi-Detached  
3 Bedroom/s  
1 Bathroom/s

Welcome to Woodlands Way, Darlington - Take a look at this charming semi-detached house in the highly sought-after village of Hurworth. This property boasts two reception rooms, three bedrooms, and a very well-appointed modern kitchen with dining area, perfect for whipping up those delicious meals.

As you step inside, you'll be greeted by a very spacious lounge room that leads out to a delightful conservatory/garden room, offering a tranquil space to relax and unwind. Out in the garden you will find a single garage that has been very cleverly and tastefully converted into a fantastic "Man Cave" or party room, providing the ideal setting for entertaining guests or escaping to on your own to watch the football!

Parking will never be an issue with space for up to 3 vehicles, making hosting friends and family a breeze. Situated at the end of a quiet cul-de-sac, peace and privacy are guaranteed, creating a serene environment to call home.

Don't miss out on the opportunity to make this property your own and enjoy the best of village living in Hurworth. Book a viewing today and step into your future home!





- Popular Hurworth Village location
- Kitchen/dining
- Party room/Man cave
- Off street parking for multiple vehicles

- Large lounge room leading to Conservatory/Garden room
- 3 Spacious bedrooms and family bathroom on first floor
- Private rear Garden

**GENERAL INFORMATION:**

Tenure: Freehold

Services: Gas central heating, mains electric, water and drainage.  
Double glazing

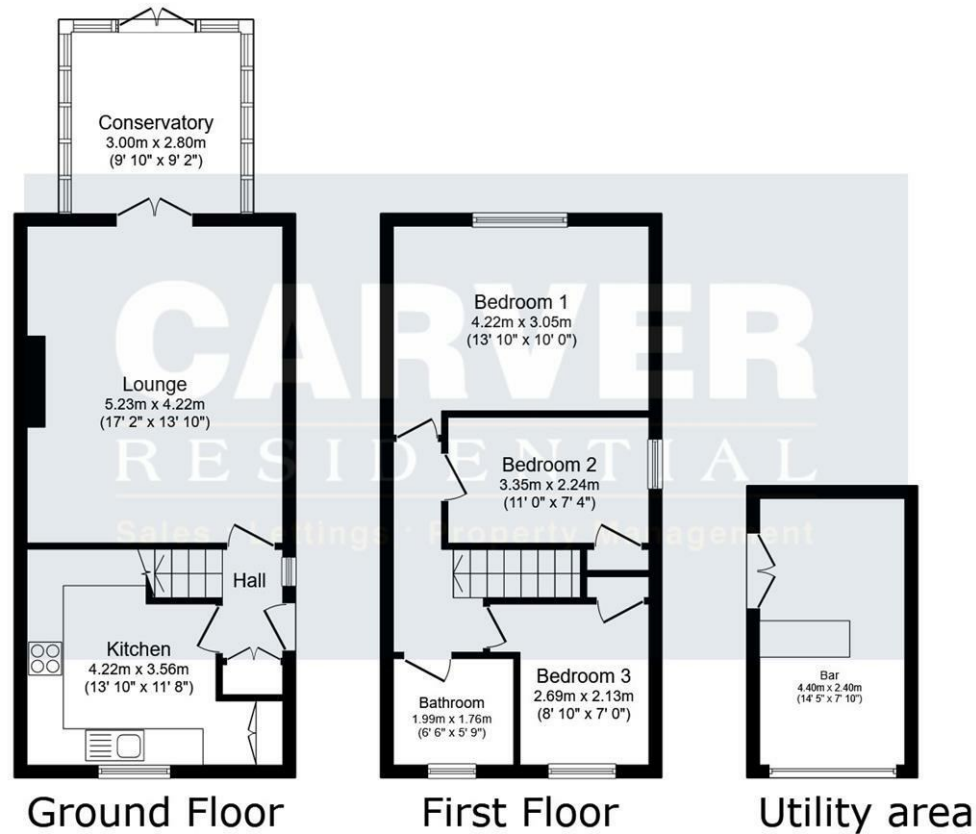
Local Authority: Darlington Borough Council (Tax Banding C)











Energy Efficiency Rating		Current	Potential
Very energy efficient - lower running costs			
81-91	A		87
69-80	B		
55-68	C		72
45-54	D		
35-44	E		
25-34	F		
1-24	G		
Not energy efficient - higher running costs			
England & Wales			EU Directive 2002/91/EC

This floor plan is for illustrative purposes only. It is not drawn to scale. Any measurements, floor areas (including any total floor area), openings and orientations are approximate. No details are guaranteed, they cannot be relied upon for any purpose and do not form any part of any agreement. No liability is taken for any error, omission or misstatement. A party must rely upon its own inspection(s). Powered by www.Propertybox.io

We can search 1,000s of mortgages for you

It could take just 15 minutes with one of our specialist advisers:  
 Call: 01325 380088. Visit: Any of our Offices. Online: [www.mortgageadvicebureau.com/carver](http://www.mortgageadvicebureau.com/carver)



Your home may be repossessed if you do not keep up repayments on your mortgage. There will be a fee for mortgage advice. The actual amount you pay will depend upon your circumstances. The fee is up to 1% but a typical fee is 0.3% of the amount borrowed

MAB 6202



These particulars do not constitute any part of an offer or contract. None of the statements contained in these particulars are to be relied on as statements or representations of fact and any intending purchaser must satisfy himself by inspection or otherwise to the correctness of each of the statements contained in these particulars. The vendor does not make or give, and neither Nick & Gordon Carver Residential or Commercial, Nick & Gordon Carver, nor any person in their employment has any authority to make or give any representation or warranty whatever in relation to this property



14 Duke Street, Darlington  
 Co Durham, DL3 7AA  
 01325 357807  
[sales@carvergroup.co.uk](mailto:sales@carvergroup.co.uk)

43 Dalton Way, Newton Aycliffe  
 Co Durham DL5 4DJ  
 01325 320676  
[aycliffe@carvergroup.co.uk](mailto:aycliffe@carvergroup.co.uk)

41 Market Place, Richmond  
 North Yorkshire, DL10 4QL  
 01748 825317  
[richmond@carvergroup.co.uk](mailto:richmond@carvergroup.co.uk)

219 High Street, Northallerton  
 North Yorkshire DL7 8LW  
 01609 777710  
[northallerton@carvergroup.co.uk](mailto:northallerton@carvergroup.co.uk)