



**CARVER**  
RESIDENTIAL  
Sales · Lettings · Property Management

Easby Court  
Easby, DL10 7JU

**£995 Per calendar month**

House - End Terrace  
2 Bedroom/s  
0 Bathroom/s

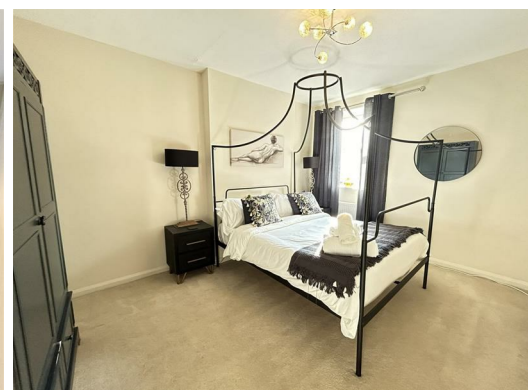
Nestled in the picturesque Village of Easby this charming Grade II listed stone cottage provides stunning views of Easby Abbey.

Featuring two double bedrooms, a cosy kitchen/diner, a comfortable living room, and a bathroom. The property also has a private garden.


The property is just a stones throw away from the vibrant market town of Richmond, making it an ideal location for enjoying both nature and local amenities.

Available immediately on a fully furnished or unfurnished basis.





GENERAL INFORMATION:  
Deposit 5 Weeks Rent  
Richmondshire Tax Band TBC

Energy Efficiency Rating		
	Current	Potential
Very energy efficient - lower running costs		
(92 plus) <b>A</b>		
(81-91) <b>B</b>		
(69-80) <b>C</b>		
(55-68) <b>D</b>		
(39-54) <b>E</b>		
(21-38) <b>F</b>		
(1-20) <b>G</b>		
Not energy efficient - higher running costs		
<b>England &amp; Wales</b>	EU Directive 2002/91/EC	

We can search 1,000s of mortgages for you

It could take just 15 minutes with one of our specialist advisers:  
Call: 01325 380088. Visit: Any of our Offices. Online: [www.mortgageadvicebureau.com/carver](http://www.mortgageadvicebureau.com/carver)



Your home may be repossessed if you do not keep up repayments on your mortgage. There will be a fee for mortgage advice. The actual amount you pay will depend upon your circumstances. The fee is up to 1% but a typical fee is 0.3% of the amount borrowed

MAB 6202



These particulars do not constitute any part of an offer or contract. None of the statements contained in these particulars are to be relied on as statements or representations of fact and any intending purchaser must satisfy himself by inspection or otherwise to the correctness of each of the statements contained in these particulars. The vendor does not make or give, and neither Nick & Gordon Carver Residential or Commercial, Nick & Gordon Carver, nor any person in their employment has any authority to make or give any representation or warranty whatever in relation to this property



14 Duke Street, Darlington  
Co Durham, DL3 7AA  
01325 357807  
[sales@carvergroup.co.uk](mailto:sales@carvergroup.co.uk)

43 Dalton Way, Newton Aycliffe  
Co Durham DL5 4DJ  
01325 320676  
[aycliffe@carvergroup.co.uk](mailto:aycliffe@carvergroup.co.uk)

41 Market Place, Richmond  
North Yorkshire, DL10 4QL  
01748 825317  
[richmond@carvergroup.co.uk](mailto:richmond@carvergroup.co.uk)

219 High Street, Northallerton  
North Yorkshire DL7 8LW  
01609 777710  
[northallerton@carvergroup.co.uk](mailto:northallerton@carvergroup.co.uk)

[www.carvergroup.co.uk](http://www.carvergroup.co.uk)