



**CARVER**  
RESIDENTIAL  
Sales · Lettings · Property Management

Monte Verdi,  
Morton On Swale, Northallerton, DL7 9RF

**Offers in the region of £360,000**

Bungalow - Detached  
3 Bedroom/s  
1 Bathroom/s

A three bedroomed detached bungalow pleasantly situated within the village of Morton On Swale. The beautifully presented and refurbished accommodation includes an open plan kitchen / breakfast room fitted with a good range of modern wall and base units including integrated hob, two ovens and a dishwasher, spacious living room with patio doors to the side, dining room, inner hall, cloak room / wc, three bedrooms, two of which are double rooms and have French doors to the rear garden and patio. The luxury family bathroom is fitted with a white suite with separate shower cubicle. The property has oil fired central heating and Upvc double glazed doors and windows. Externally there is a large gravelled forecourt area providing parking for a number of vehicles, front lawn with rose garden and gated access to the driveway leading to the garage. There is a stocked south east facing rear garden with lawn and patio area's. The village of Moton on Swale offers a primary school, village shop, public house and bus routes.





- Three bedroomed detached bungalow with garage and off street parking
- Refurbished and updated to a high specification
- Spacious living room and separate dining room
- Large graveled off street parking space to the front and gated access to the drive and garage
- Village location providing easy access to Northallerton and A1M
- Beautifully presented living accommodation
- Modern kitchen with integrated appliances and luxury bathroom and separate wc
- Both double bedrooms have French doors to the rear
- Gardens to the front and rear of the property with lawn, borders and patio area's

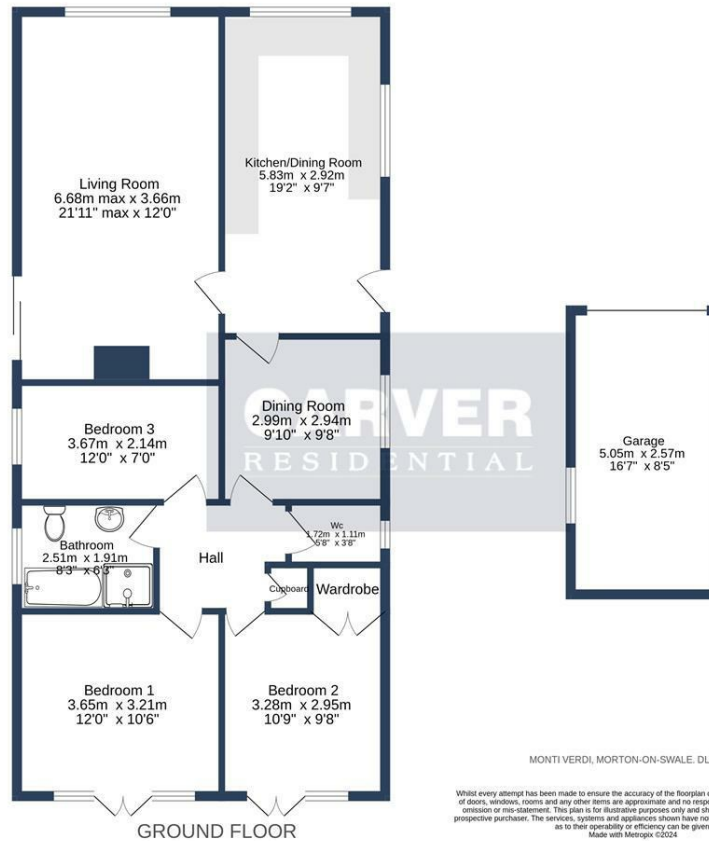
#### GENERAL INFORMATION

Tenure: Freehold

Services: Oil central heating, mains electric, water and drainage.

Double glazing.

Local Authority: North Yorkshire Band D



MONTIVERDI, MORTON-ON-SWALE, DL7 9RF

Whilst every attempt has been made to ensure the accuracy of the floorplan contained here, measurements of doors, windows, rooms and any other items are approximate and no responsibility is taken for any error, omission or mis-statement. This plan is for illustrative purposes only and should be used as such by any prospective purchaser. The services, systems and appliances shown have not been tested and no guarantee as to their operability or efficiency can be given.  
Made with Metropix ©2024

Energy Efficiency Rating		Current	Potential
<small>Very energy efficient - lower running costs</small>			
(92 plus) A			
(81-91) B			78
(69-80) C			
(55-68) D		59	
(39-54) E			
(21-38) F			
(1-20) G			
<small>Not energy efficient - higher running costs</small>			
<b>England &amp; Wales</b>		EU Directive 2002/91/EC	

**We can search 1,000s of mortgages for you**

It could take just 15 minutes with one of our specialist advisers:  
Call: 01325 380088. Visit: Any of our Offices. Online: [www.mortgageadvicebureau.com/carver](http://www.mortgageadvicebureau.com/carver)



Your home may be repossessed if you do not keep up repayments on your mortgage. There will be a fee for mortgage advice. The actual amount you pay will depend upon your circumstances. The fee is up to 1% but a typical fee is 0.3% of the amount borrowed

MAB 6202



These particulars do not constitute any part of an offer or contract. None of the statements contained in these particulars are to be relied on as statements or representations of fact and any intending purchaser must satisfy himself by inspection or otherwise to the correctness of each of the statements contained in these particulars. The vendor does not make or give, and neither Nick & Gordon Carver Residential or Commercial, Nick & Gordon Carver, nor any person in their employment has any authority to make or give any representation or warranty whatever in relation to this property



**14 Duke Street, Darlington  
Co Durham, DL3 7AA  
01325 357807  
sales@carvergroup.co.uk**

**43 Dalton Way, Newton Aycliffe  
Co Durham DL5 4DJ  
01325 320676  
aycliffe@carvergroup.co.uk**

**41 Market Place, Richmond  
North Yorkshire, DL10 4QL  
01748 825317  
richmond@carvergroup.co.uk**

**219 High Street, Northallerton  
North Yorkshire DL7 8LW  
01609 777710  
northallerton@carvergroup.co.uk**

[www.carvergroup.co.uk](http://www.carvergroup.co.uk)