



CARVER
RESIDENTIAL
Sales · Lettings · Property Management

47 Redmire Close
Darlington, DL1 2GL

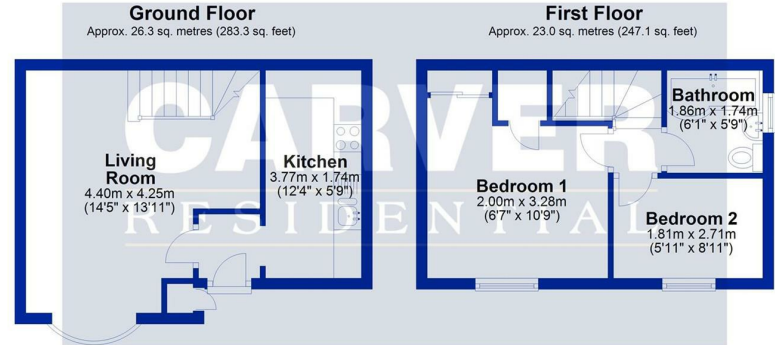
Offers in the region of £89,950

House - Terraced
2 Bedroom/s
1 Bathroom/s

NO ONWARD CHAIN AND VACANT POSSESSION. Benefiting from off street parking to the front alongside the lawned garden. The internal accommodation includes living/dining room, kitchen, two bedrooms and bathroom. The property is heated via night storage heaters and is double glazed.

GENERAL INFORMATION:

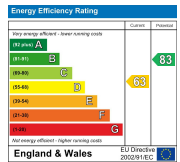
Tenure: Freehold
 Services: Electric heating, mains electric, water and drainage.
 Double glazing
 Local Authority: Darlington Borough Council (Tax Banding A)



Total area: approx. 49.3 sq. metres (530.4 sq. feet)

For identification purposes only. Not to scale.
 Plan produced using PlanUp.

- OFF STREET PARKING
- VACANT PROPERTY WITH NO ONWARD CHAIN
- CUL-DE-SAC RESIDENTIAL LOCATION
- GOOD TRANSPORT LINKS NEARBY



We can search 1,000s of mortgages for you It could take just 15 minutes with one of our specialist advisers:
 Call: 01325 380088. Visit: Any of our Offices. Online: www.mortgageadvicebureau.com/carver

Mortgage Advice Bureau Your home may be repossessed if you do not keep up repayments on your mortgage. There will be a fee for mortgage advice. The actual amount you pay will depend upon your circumstances. The fee is up to 1% but a typical fee is 0.3% of the amount borrowed. **MAB 6202**

These particulars do not constitute any part of an offer or contract. None of the statements contained in these particulars are to be relied on as statements or representations of fact and any intending purchaser must satisfy himself by inspection or otherwise to the correctness of each of the statements contained in these particulars. The vendor does not make or give, and neither Nick & Gordon Carver Residential or Commercial, Nick & Gordon Carver, nor any person in their employment has any authority to make or give any representation or warranty whatever in relation to this property



14 Duke Street, Darlington
 County Durham, DL3 7AA
 Tel: 01325 357807
sales@carvergroup.co.uk

26 Market Place, Richmond
 North Yorkshire, DL10 4QG
 Tel: 01748 825317
richmond@carvergroup.co.uk

43 Dalton Way, Newton Aycliffe
 County Durham, DL5 4DJ
 Tel: 01325 320676
aycliffe@carvergroup.co.uk

219 High Street, Northallerton
 North Yorkshire, DL7 8LW
 Tel: 01609 777710
northallerton@carvergroup.co.uk