

Whitefields Drive Richmond DL10 7DQ Price £270,000



**CARVER**  
RESIDENTIAL  
Sales · Lettings · Property Management



20 Whitefields, Richmond, North Yorkshire, is a beautifully extended family home situated in a sought-after location, within walking distance to two primary schools as well as St. Francis Xavier School and Richmond School, this home is ideal for families seeking excellent education options.

Spacious and well-presented, the property has been thoughtfully extended to the side and rear, offering a wealth of living space perfect for family life.

The ground floor boasts a good-sized lounge/diner, with double doors opening into a bright garden room, ideal for relaxing or entertaining. The extended kitchen is well-equipped and leads to the integral garage and utility room with plumbing for white goods and housing the boiler.

The first floor features three generously sized double bedrooms, one of which features a fully tiled en suite shower room and “walk in wardrobe, a fully tiled family bathroom services the other two bedrooms.

Externally the property has a block paved driveway which can accommodate two cars and provides access to the garage, to the rear you will find a low-maintenance rear garden, paved with stunning Indian sandstone and featuring attractive planting areas, offering the perfect space for outdoor enjoyment.











- Extended to the side and rear
- Walking distance to good schools
  - Three double bedrooms
  - En suite shower room
  - Double driveway
  - Large Floorplan



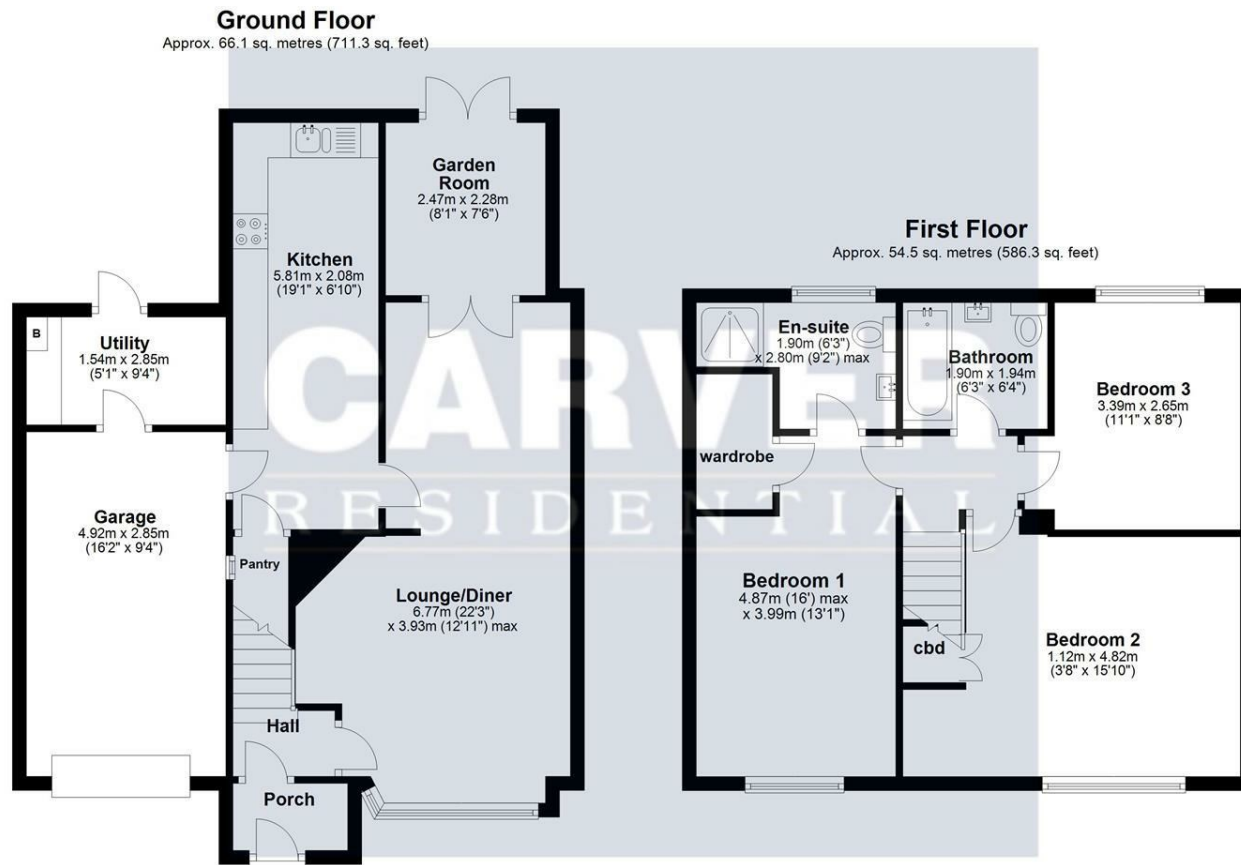




**CARVER**  
RESIDENTIAL  
Sales · Lettings · Property Management







Total area: approx. 120.6 sq. metres (1297.7 sq. feet)

Sketch Plan: Not To Scale. For Illustrative Purposes Only. Created by HJ Cadplan Ltd.  
Plan produced using PlanUp.

Energy Efficiency Rating		Current	Potential
Very energy efficient - lower running costs			
(92 plus) <b>A</b>			
(81-91) <b>B</b>			
(69-80) <b>C</b>		73	83
(55-68) <b>D</b>			
(39-54) <b>E</b>			
(21-38) <b>F</b>			
(1-20) <b>G</b>			
Not energy efficient - higher running costs			
<b>England &amp; Wales</b>		EU Directive 2002/91/EC	

We can search 1,000s of mortgages for you

It could take just 15 minutes with one of our specialist advisers:  
Call: 01325 380088. Visit: Any of our Offices. Online: [www.mortgageadvicebureau.com/carver](http://www.mortgageadvicebureau.com/carver)



Your home may be repossessed if you do not keep up repayments on your mortgage. There will be a fee for mortgage advice. The actual amount you pay will depend upon your circumstances. The fee is up to 1% but a typical fee is 0.3% of the amount borrowed

MAB 6202



These particulars do not constitute any part of an offer or contract. None of the statements contained in these particulars are to be relied on as statements or representations of fact and any intending purchaser must satisfy himself by inspection or otherwise to the correctness of each of the statements contained in these particulars. The vendor does not make or give, and neither Nick & Gordon Carver Residential or Commercial, Nick & Gordon Carver, nor any person in their employment has any authority to make or give any representation or warranty whatever in relation to this property

80 High Street  
Yarm, TS15 9AH  
Tel: 01642 420090  
[yarm@carvergroup.co.uk](mailto:yarm@carvergroup.co.uk)

14 Duke Street, Darlington  
County Durham, DL3 7AA  
Tel: 01325 357807  
[sales@carvergroup.co.uk](mailto:sales@carvergroup.co.uk)

26 Market Place, Richmond  
North Yorkshire, DL10 4QG  
Tel: 01748 825317  
[richmond@carvergroup.co.uk](mailto:richmond@carvergroup.co.uk)

43 Dalton Way, Newton Aycliffe  
County Durham, DL5 4DJ  
Tel: 01325 320676  
[aycliffe@carvergroup.co.uk](mailto:aycliffe@carvergroup.co.uk)

219 High Street, Northallerton  
North Yorkshire, DL7 8LW  
Tel: 01609 777710  
[northallerton@carvergroup.co.uk](mailto:northallerton@carvergroup.co.uk)