

Grammar School Court Scorton Richmond DL10 6SY Offers over £125,000



**CARVER**  
RESIDENTIAL  
Sales · Lettings · Property Management

A well-presented and surprisingly spacious first floor apartment in this popular North Yorkshire village. Internal viewing will reveal a communal hallway with secure intercom system and stairway leading to the first floor with private door to the apartment.

Viewing will reveal a small hallway with useful storage cupboard and a large open plan lounge diner featuring high ceilings and stunning, double height arched windows. There are double doors opening to the recently updated kitchen which has a good range of wall and floor units with built in oven & hob, built in microwave and 1 ½ bowl sink along with an airing cupboard which provides extra storage space. The inner hall gives access to two bedrooms generous bedrooms with those stunning arched windows and a recently updated house bathroom. Externally there are communal gardens, A large store room and bin stores and allocated parking space. The village boasts a number of amenities to include a shop and post office, two well regarded pubs, doctors surgery, nursery, primary school, garage and is easily accessible to the nearby A1(M).

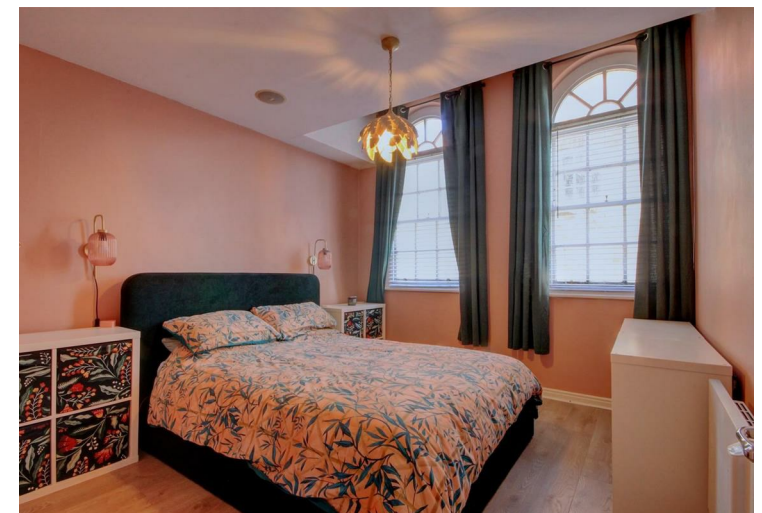






- First Floor Apartment
- Allocated Parking Space With Visitor Spaces Available For Guests
  - Ideal For First Time Buyers
  - Ideal Holiday Let or Second Home
    - Popular Village
  - Close to Major Road Links

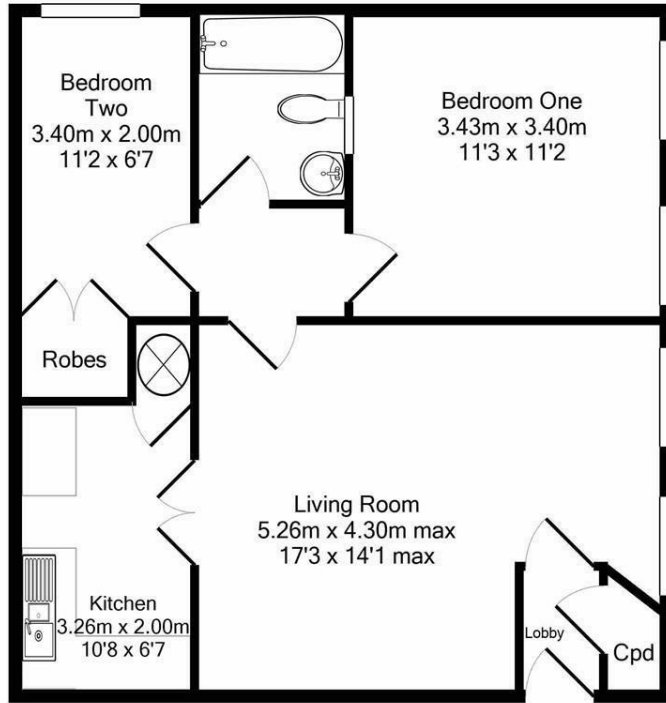
General Remarks  
General Remarks - Tenure: Leasehold. 999 year lease with 974 years remaining.  
Service charge is in the region of £630 per annum (payable over 8 months.)  
Management company - SGSMS Ltd  
Services: Electric Heating  
Council Tax Band B North Yorkshire County Council





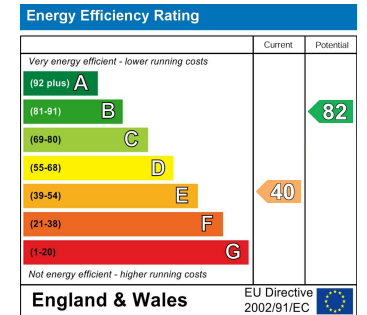
**CARVER**  
RESIDENTIAL  
Sales · Lettings · Property Management





SCHOOL HOUSE, GRAMMAR SCHOOL COURT, SCORTON. DL10 6SY.  
TOTAL APPROX. FLOOR AREA 55.5 SQ.M. (598 SQ.FT.)

Whilst every attempt has been made to ensure the accuracy of the floor plan contained here, measurements of doors, windows, rooms and any other items are approximate and no responsibility is taken for any error, omission, or mis-statement. This plan is for illustrative purposes only and should be used as such by any prospective purchaser. The services, systems and appliances shown have not been tested and no guarantee as to their operability or efficiency can be given  
Made with Metropix ©2021



We can search 1,000s of mortgages for you

It could take just 15 minutes with one of our specialist advisers:  
Call: 01325 380088. Visit: Any of our Offices. Online: [www.mortgageadvicebureau.com/carver](http://www.mortgageadvicebureau.com/carver)



Your home may be repossessed if you do not keep up repayments on your mortgage. There will be a fee for mortgage advice. The actual amount you pay will depend upon your circumstances. The fee is up to 1% but a typical fee is 0.3% of the amount borrowed

MAB 6202



These particulars do not constitute any part of an offer or contract. None of the statements contained in these particulars are to be relied on as statements or representations of fact and any intending purchaser must satisfy himself by inspection or otherwise to the correctness of each of the statements contained in these particulars. The vendor does not make or give, and neither Nick & Gordon Carver Residential or Commercial, Nick & Gordon Carver, nor any person in their employment has any authority to make or give any representation or warranty whatever in relation to this property

80 High Street  
Yarm, TS15 9AH  
Tel: 01642 420090  
[yarm@carvergroup.co.uk](mailto:yarm@carvergroup.co.uk)

14 Duke Street, Darlington  
County Durham, DL3 7AA  
Tel: 01325 357807  
[sales@carvergroup.co.uk](mailto:sales@carvergroup.co.uk)

26 Market Place, Richmond  
North Yorkshire, DL10 4QG  
Tel: 01748 825317  
[richmond@carvergroup.co.uk](mailto:richmond@carvergroup.co.uk)

43 Dalton Way, Newton Aycliffe  
County Durham, DL5 4DJ  
Tel: 01325 320676  
[aycliffe@carvergroup.co.uk](mailto:aycliffe@carvergroup.co.uk)

219 High Street, Northallerton  
North Yorkshire, DL7 8LW  
Tel: 01609 777710  
[northallerton@carvergroup.co.uk](mailto:northallerton@carvergroup.co.uk)