



CARVER
RESIDENTIAL
Sales · Lettings · Property Management

Front Street,
Staindrop, Darlington, DL2 3NH

Offers in the region of £695,000

House - Detached
6 Bedroom/s
3 Bathroom/s

A beautifully designed and generously proportioned home, built in 2016 by the current owner and set in a peaceful location within the charming village of Staindrop. Constructed from elegant Derbyshire dressed stone, this three-story residence offers six spacious bedrooms and a versatile layout, perfect for modern family living.

The ground floor boasts a welcoming reception hall, a large living room with a striking stone fireplace, and an expansive open-plan kitchen, dining, and garden room suite, ideal for entertaining. High-quality finishes include sash windows, underfloor heating, and a stunning central oak and glass staircase.

The first floor features a luxurious master suite with en suite, three additional double bedrooms, and a stylish family bathroom. The second floor offers two more spacious bedrooms and an additional shower room.

Externally, a double driveway and detached double garage provide ample parking, while the rear garden, framed by wrought iron gates, offers a perfect blend of lawn and patio, all centred around a mature sycamore tree. Viewing is highly recommended to fully appreciate the quality and scale of this exceptional property.





- LARGE SIX BEDROOM HOME
- RURAL VILLAGE LOCATION
- PLENTY OF PARKING

- BUILT IN 2016
- SUPERB FINISHES THROUGHOUT
- DOUBLE GARAGE AND TWO DRIVEWAYS

GENERAL INFORMATION:

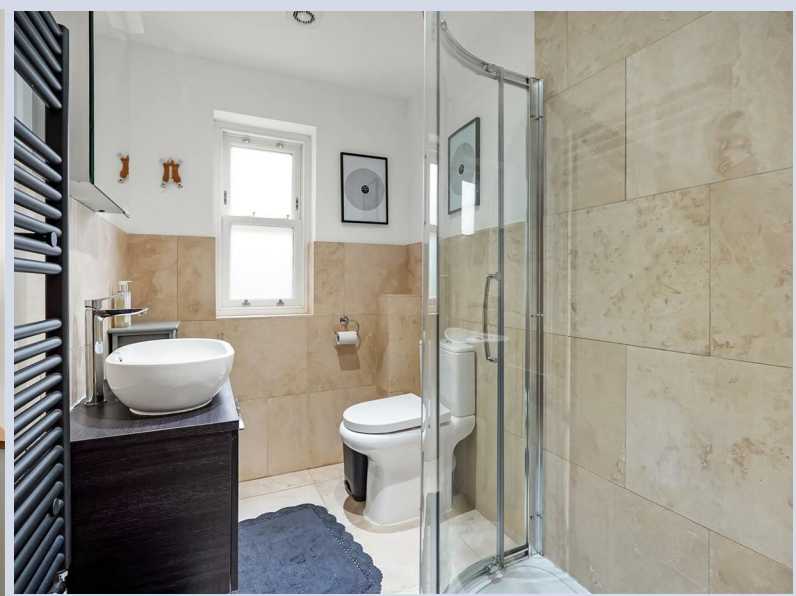
Tenure: Freehold

Services: Air Source Heat Pump heating, mains electric, water and drainage.

Double glazing

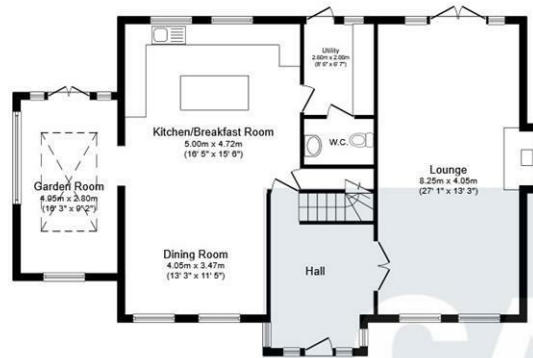
Local Authority: Durham County Council (Tax Banding F)



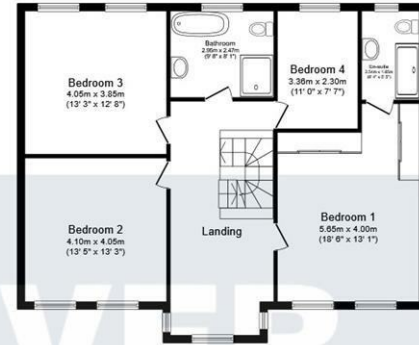




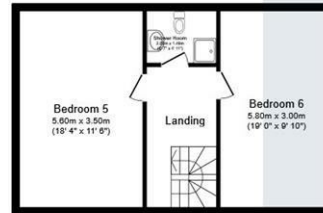




Ground Floor



First Floor



Second Floor

CARVER
RESIDENTIAL
Sales · Lettings · Property Management

Energy Efficiency Rating		Current	Potential
Very energy efficient - lower running costs			97
(81-91) A			
(69-80) B			83
(55-68) C			
(39-54) D			
(21-38) E			
(9-20) F			
Not energy efficient - higher running costs			
England & Wales		EU Directive 2002/91/EC	

This floor plan is for illustrative purposes only. It is not drawn to scale. Any measurements, floor areas (including any total floor area), openings and orientations are approximate. No details are guaranteed, they cannot be relied upon for any purpose and do not form any part of any agreement. No liability is taken for any error, omission or misstatement. A party must rely upon its own inspection(s). Powered by www.Propertybox.io

We can search 1,000s of mortgages for you

It could take just 15 minutes with one of our specialist advisers:
Call: 01325 380088. Visit: Any of our Offices. Online: www.mortgageadvicebureau.com/carver



Your home may be repossessed if you do not keep up repayments on your mortgage. There will be a fee for mortgage advice. The actual amount you pay will depend upon your circumstances. The fee is up to 1% but a typical fee is 0.3% of the amount borrowed

MAB 6202



These particulars do not constitute any part of an offer or contract. None of the statements contained in these particulars are to be relied on as statements or representations of fact and any intending purchaser must satisfy himself by inspection or otherwise to the correctness of each of the statements contained in these particulars. The vendor does not make or give, and neither Nick & Gordon Carver Residential or Commercial, Nick & Gordon Carver, nor any person in their employment has any authority to make or give any representation or warranty whatever in relation to this property

naea
propertymark

PROTECTED



14 Duke Street, Darlington
County Durham, DL3 7AA
Tel: 01325 357807
sales@carvergroup.co.uk

26 Market Place, Richmond
North Yorkshire, DL10 4QG
Tel: 01748 825317
richmond@carvergroup.co.uk

43 Dalton Way, Newton Aycliffe
County Durham, DL5 4DJ
Tel: 01325 320676
aycliffe@carvergroup.co.uk

219 High Street, Northallerton
North Yorkshire, DL7 8LW
Tel: 01609 777710
northallerton@carvergroup.co.uk

www.carvergroup.co.uk