



CARVER
RESIDENTIAL
Sales · Lettings · Property Management

Bewick Crescent
Newton Aycliffe, DL5 5LL

Offers in the region of £80,000

House - Terraced
2 Bedroom/s
1 Bathroom/s

Occupying a lovely position within a popular location, this 2 bedroom mid-terrace property is offered for sale with no onward chain and would make an ideal home for a first time buyer or anyone wishing to downsize. An internal viewing will reveal a living room, fitted kitchen, sun room with French doors opening to the rear garden, two good size bedrooms and a bathroom with separate WC. There is a sizeable enclosed garden to the rear with uPVC double glazing and gas central heating to radiators.





Agents Notes

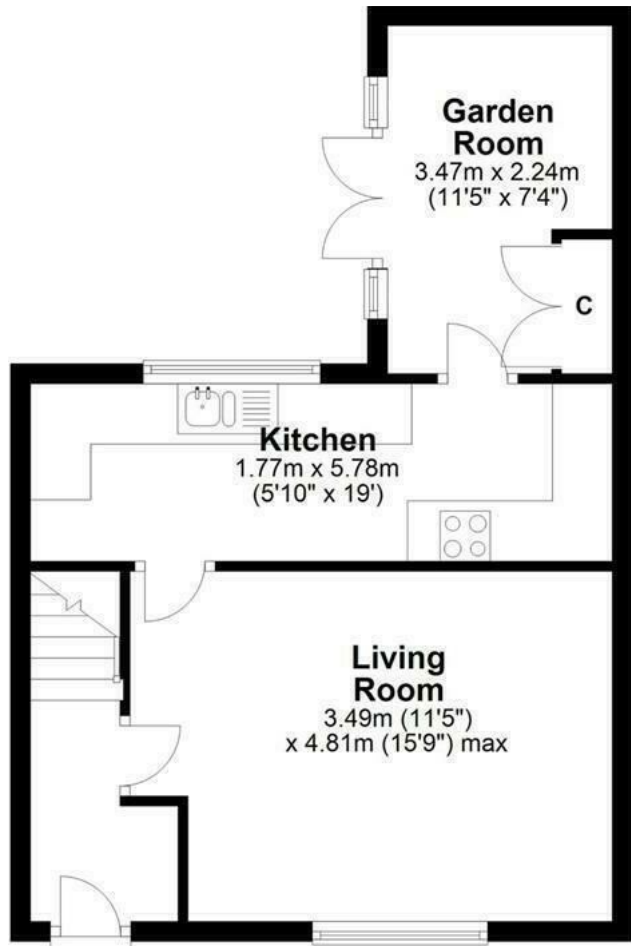
Tenure:- Freehold

Mains gas, (central heating to radiators), electricity & drainage

uPVC double glazing throughout

Council Tax:- Band A

Local Authority:- Durham County Council



Bewick Crescent Neton Aycliffe



Energy Efficiency Rating		Current	Potential
Very energy efficient - lower running costs			
(92 plus)	A		
(81-91)	B		83
(69-80)	C	65	
(55-68)	D		
(39-54)	E		
(21-38)	F		
(1-20)	G		
Not energy efficient - higher running costs			
England & Wales		EU Directive 2002/91/EC	

We can search 1,000s of mortgages for you

It could take just 15 minutes with one of our specialist advisers:
Call: 01325 380088. Visit: Any of our Offices. Online: www.mortgageadvicebureau.com/carver



Your home may be repossessed if you do not keep up repayments on your mortgage. There will be a fee for mortgage advice. The actual amount you pay will depend upon your circumstances. The fee is up to 1% but a typical fee is 0.3% of the amount borrowed

MAB 6202



These particulars do not constitute any part of an offer or contract. None of the statements contained in these particulars are to be relied on as statements or representations of fact and any intending purchaser must satisfy himself by inspection or otherwise to the correctness of each of the statements contained in these particulars. The vendor does not make or give, and neither Nick & Gordon Carver Residential or Commercial, Nick & Gordon Carver, nor any person in their employment has any authority to make or give any representation or warranty whatever in relation to this property



14 Duke Street, Darlington
County Durham, DL3 7AA
Tel: 01325 357807
sales@carvergroup.co.uk

26 Market Place, Richmond
North Yorkshire, DL10 4QG
Tel: 01748 825317
richmond@carvergroup.co.uk

43 Dalton Way, Newton Aycliffe
County Durham, DL5 4DJ
Tel: 01325 320676
aycliffe@carvergroup.co.uk

219 High Street, Northallerton
North Yorkshire, DL7 8LW
Tel: 01609 777710
northallerton@carvergroup.co.uk