



**CARVER**  
RESIDENTIAL  
Sales · Lettings · Property Management

24, Strait Lane,  
Hurworth, Darlington, DL2 2AL  
**Offers over £250,000**

House - Semi-Detached  
3 Bedroom/s  
1 Bathroom/s

Take a look at this charming semi-detached house located on the sought-after Strait Lane in Hurworth village, Darlington. This property boasts two reception rooms, three bedrooms, and a recently renovated kitchen extension, making it an ideal home for families looking for a comfortable and spacious living space.

One of the highlights of this property is the recently extended open-plan kitchen and living area, perfect for entertaining guests or simply enjoying family time. The kitchen features modern appliances and ample storage space, making it a joy to cook and dine in.

For those who value outdoor space, this property offers a beautiful large private garden, providing a tranquil retreat right at your doorstep. The garden is ideal for children to play in or for hosting summer barbecues with friends and family.

In addition to the ample indoor living space, this property also offers off-street parking for two vehicles, ensuring convenience for homeowners with multiple cars.

Located in the popular Hurworth village, this property combines the tranquility of village life with easy access to local amenities, restaurants / Pubs and schools, making it a perfect choice for those seeking a peaceful yet convenient lifestyle.

Don't miss out on the opportunity to make this lovely house your new home. Contact us today to arrange a viewing and experience the charm of living in this delightful property on Strait Lane.





- Popular Hurworth Village Location
- Large Garden to rear
- Open plan living and kitchen area

- Recently extended and renovated
- Off street parking
- Close to restaurants and amenities

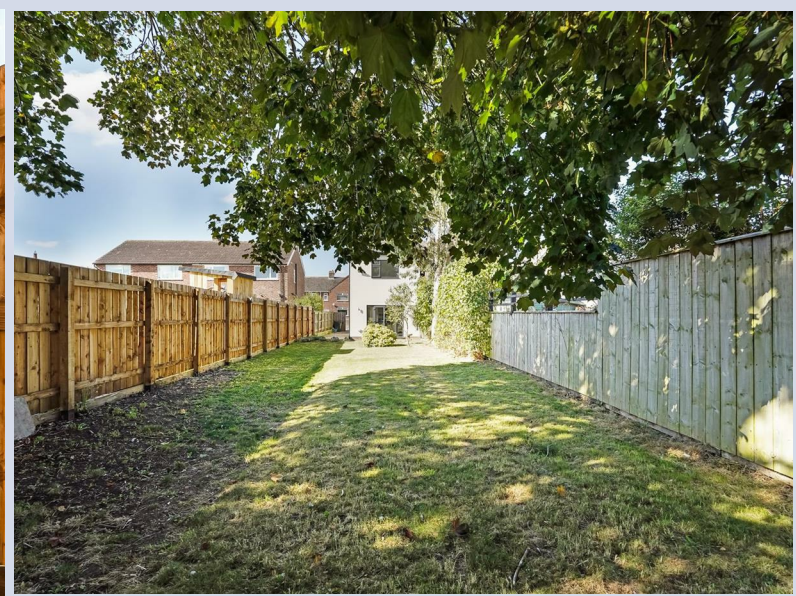
**GENERAL INFORMATION:**

Tenure: Freehold

Services: Gas central heating, mains electric, water and drainage.  
Double glazing

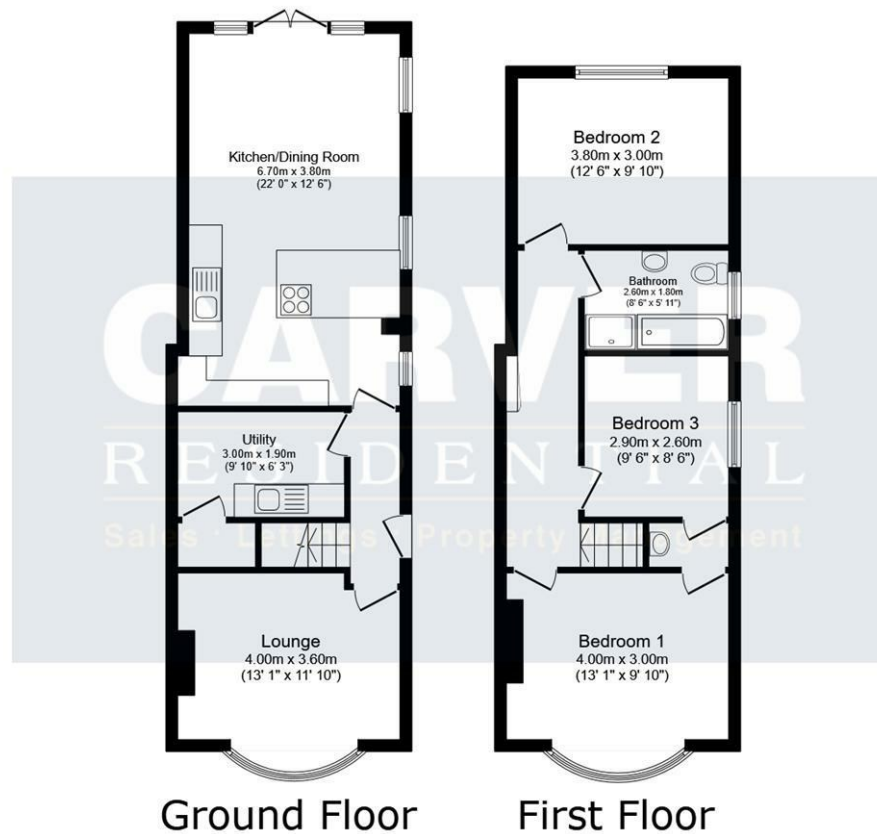
Local Authority: Darlington Borough Council (Tax Banding B)











Energy Efficiency Rating		Current	Potential
Very energy efficient - lower running costs			
(81-91)	A		81
(71-80)	B		
(61-70)	C	67	
(51-60)	D		
(31-50)	E		
(21-30)	F		
(1-20)	G		
Not energy efficient - higher running costs			
England & Wales		EU Directive 2002/91/EC	

This floor plan is for illustrative purposes only. It is not drawn to scale. Any measurements, floor areas (including any total floor area), openings and orientations are approximate. No details are guaranteed, they cannot be relied upon for any purpose and do not form any part of any agreement. No liability is taken for any purpose, omission or misstatement. A party must rely upon its own inspection(s). Powered by www.Propertybox.io

**We can search 1,000s of mortgages for you** It could take just 15 minutes with one of our specialist advisers:  
 Call: 01325 380088. Visit: Any of our Offices. Online: [www.mortgageadvicebureau.com/carver](http://www.mortgageadvicebureau.com/carver)

**Mortgage Advice Bureau** Your home may be repossessed if you do not keep up repayments on your mortgage. There will be a fee for mortgage advice. The actual amount you pay will depend upon your circumstances. The fee is up to 1% but a typical fee is 0.3% of the amount borrowed

MAB 6202



These particulars do not constitute any part of an offer or contract. None of the statements contained in these particulars are to be relied on as statements or representations of fact and any intending purchaser must satisfy himself by inspection or otherwise to the correctness of each of the statements contained in these particulars. The vendor does not make or give, and neither Nick & Gordon Carver Residential or Commercial, Nick & Gordon Carver, nor any person in their employment has any authority to make or give any representation or warranty whatever in relation to this property

 <b>PROTECTED</b>	 THE UK ASSOCIATION OF LETTING AGENTS	<b>14 Duke Street, Darlington</b> <b>Co Durham, DL3 7AA</b> <b>01325 357807</b> <b>sales@carvergroup.co.uk</b>	<b>63 Dalton Way, Newton Aycliffe</b> <b>Co Durham DL5 4NB</b> <b>01325 320676</b> <b>aycliffe@carvergroup.co.uk</b>	<b>41 Market Place, Richmond</b> <b>North Yorkshire, DL10 4QL</b> <b>01748 825317</b> <b>richmond@carvergroup.co.uk</b>	<b>219 High Street, Northallerton</b> <b>North Yorkshire DL7 8LW</b> <b>01609 777710</b> <b>northallerton@carvergroup.co.uk</b>
----------------------	--	---	---	--	--