



CARVER
RESIDENTIAL
Sales · Lettings · Property Management

Water View

Middleton St. George, Darlington, DL2 1JQ

Offers in the region of £200,000

House - Terraced
3 Bedroom/s
2 Bathroom/s

Nestled in the charming village of Middleton St. George, near Darlington this impressive house offers a delightful blend of character and modern living. The property boasts two reception rooms, dining room with feature log burner, fitted kitchen with integrated appliances, perfect for entertaining guests or simply relaxing. With three good sized bedrooms and a large bathroom/WC, there's ample space for the whole family to enjoy.

Stepping outside, you'll be greeted by a large, mature garden that is sure to impress any green thumb. The garden features a stunning and unique lodge, providing a tranquil retreat, perfect for inviting guests. Additionally, the property comes with a driveway and garage, offering convenient parking options for you and your visitors.

Located in a picturesque village with amenities close by, this home offers a peaceful retreat from the hustle and bustle of town life. Whether you're looking to unwind in the garden, host gatherings in the reception rooms, or simply enjoy the tranquility of village living, this property has something for everyone.





- PICTURESQUE VILLAGE LOCATION WITH AMENITIES
- DECEPTIVELY SPACIOUS PROPERTY
- IDEALLY SUITED TO A WIDE VARIETY OF BUYERS
- PRIVACY GATES OPENING TO DRIVEWAY TO THE REAR
- WELL PLACED FOR EASY ACCESS TO THE MARKET TOWNS OF DARLINGTON & YARM
- TWO RECEPTION ROOMS
- MATURE, ESTABLISHED REAR GARDEN WITH LODGE.
- INTERNAL VIEWING IS THE ONLY WAY TO APPRECIATE THIS FINE HOME.

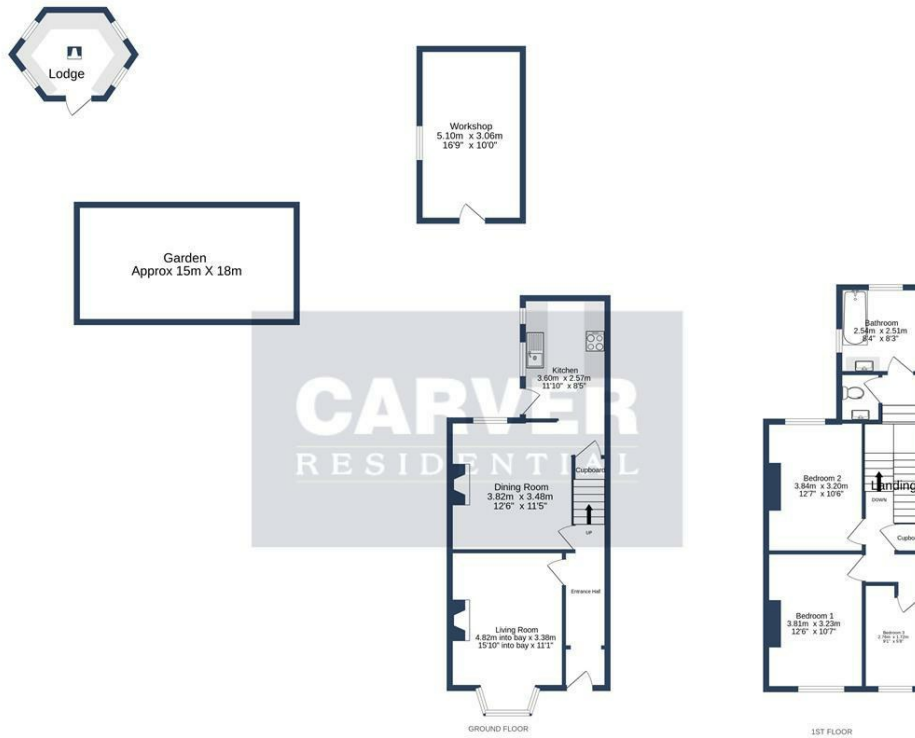
GENERAL INFORMATION

Tenure: Freehold

Services: Gas central heating, mains electric, water and drainage.

Double glazing

Local Authority: Darlington (Tax Banding B)



WATER VIEW, MIDDLETON-ST-GEORGE, DL2 1JQ.

Whilst every attempt has been made to ensure the accuracy of the floorplan contained here, measurements of doors, windows, rooms and any other items are approximate and no responsibility is taken for any error, omission or mis-statement. This plan is for illustrative purposes only and should be used as such by any prospective purchaser. The services, systems and appliances shown have not been tested and no guarantee as to their operability or efficiency can be given.
Made with Metropix ©2024

Energy Efficiency Rating		
	Current	Potential
Very energy efficient - lower running costs		
(92 plus) A		86
(81-91) B		
(69-80) C	71	
(55-68) D		
(39-54) E		
(21-38) F		
(1-20) G		
Not energy efficient - higher running costs		
England & Wales		EU Directive 2002/91/EC

We can search 1,000s of mortgages for you

It could take just 15 minutes with one of our specialist advisers:
Call: 01325 380088. Visit: Any of our Offices. Online: www.mortgageadvicebureau.com/carver



Your home may be repossessed if you do not keep up repayments on your mortgage. There will be a fee for mortgage advice. The actual amount you pay will depend upon your circumstances. The fee is up to 1% but a typical fee is 0.3% of the amount borrowed

MAB 6202



These particulars do not constitute any part of an offer or contract. None of the statements contained in these particulars are to be relied on as statements or representations of fact and any intending purchaser must satisfy himself by inspection or otherwise to the correctness of each of the statements contained in these particulars. The vendor does not make or give, and neither Nick & Gordon Carver Residential or Commercial, Nick & Gordon Carver, nor any person in their employment has any authority to make or give any representation or warranty whatever in relation to this property



14 Duke Street, Darlington
County Durham, DL3 7AA
Tel: 01325 357807
sales@carvergroup.co.uk

26 Market Place, Richmond
North Yorkshire, DL10 4QG
Tel: 01748 825317
richmond@carvergroup.co.uk

43 Dalton Way, Newton Aycliffe
County Durham, DL5 4DJ
Tel: 01325 320676
aycliffe@carvergroup.co.uk

219 High Street, Northallerton
North Yorkshire, DL7 8LW
Tel: 01609 777710
northallerton@carvergroup.co.uk

www.carvergroup.co.uk