

Wordsell Way, Shildon, DL4 2GU | Offers in the region of £265,000



CARVER
RESIDENTIAL
Sales · Lettings · Property Management

A DOUBLE-FRONTED detached, spacious family 4/5 bedroom home spread over three floors and providing approximately 1646sq ft/153sq m of living accommodation. On a sought after new build estate, built in 2017, it has the benefit of the remaining balance of the 10, year NHBC guarantee. With nearby local "Good" and "Outstanding" schooling, it also benefits from easy access to the A1(M) and further commuting routes.

An internal viewing will reveal a large and welcoming entrance hallway with ground floor WC and a versatile front aspect reception room which could be utilised as a large study, play room, sitting room or optional 5th bedroom. The ground floor is completed with a full-width living/dining room with French doors and "Juliet" balcony over the South facing rear garden. From the entrance hallway a staircase leads to the lower ground floor with a further WC and a fabulous full-width open plan fitted kitchen/breakfast room having French doors opening to the South facing, low maintenance rear garden with ample room for play and entertaining. A useful utility room completes the lower ground floor with space for a dryer, plumbing for an automatic washing machine with further storage and bench space. The first floor features a principal bedroom with en-suite shower room/WC, 3 further bedrooms and a recently installed modern family bathroom/WC featuring a waterfall shower. Externally there property occupies a corner plot with lawn and gravelled areas to the front and low maintenance enclosed gardens to the rear. Equipped with gas central heating to radiators and uPVC double glazing we would encourage an internal viewing at the earliest opportunity.







Tenure:- Freehold

Mains gas, (central heating to radiators),
electricity & drainage

uPVC double glazing throughout

Council Tax:- Band D

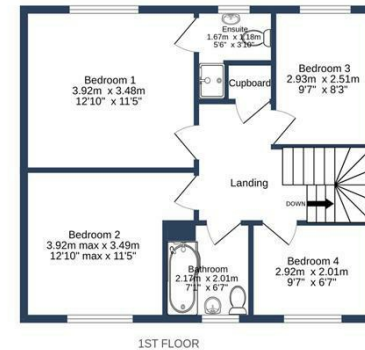
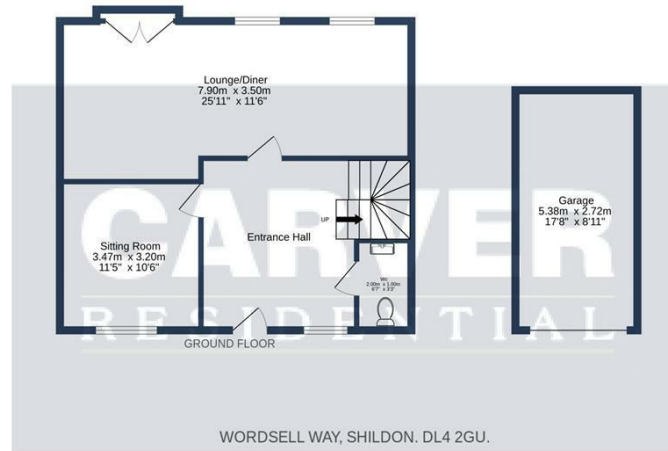
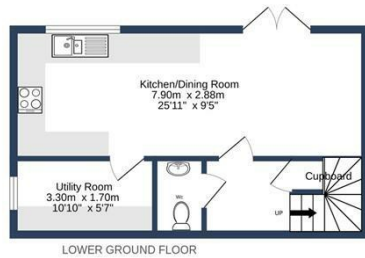
Local Authority:- Durham County Council





CARVER
RESIDENTIAL
Sales · Lettings · Property Management





Energy Efficiency Rating		Current	Potential
<i>Very energy efficient - lower running costs</i>			
(92 plus) A			89
(81-91) B		82	
(69-80) C			
(55-68) D			
(39-54) E			
(21-38) F			
(1-20) G			
<i>Not energy efficient - higher running costs</i>			
England & Wales		EU Directive 2002/91/EC	

Whilst every attempt has been made to ensure the accuracy of the floorplan contained here, measurements of doors, windows, rooms and any other items are approximate and no responsibility is taken for any error, omission or mis-statement. This plan is for illustrative purposes only and should be used as such by any prospective purchaser. The services, systems and appliances shown have not been tested and no guarantee as to their operability or efficiency can be given.
Made with Metropix ©2024

We can search 1,000s of mortgages for you

It could take just 15 minutes with one of our specialist advisers:
Call: 01325 380088. Visit: Any of our Offices. Online: www.mortgageadvicebureau.com/carver



Your home may be repossessed if you do not keep up repayments on your mortgage. There will be a fee for mortgage advice. The actual amount you pay will depend upon your circumstances. The fee is up to 1% but a typical fee is 0.3% of the amount borrowed

MAB 6202



These particulars do not constitute any part of an offer or contract. None of the statements contained in these particulars are to be relied on as statements or representations of fact and any intending purchaser must satisfy himself by inspection or otherwise to the correctness of each of the statements contained in these particulars. The vendor does not make or give, and neither Nick & Gordon Carver Residential or Commercial, Nick & Gordon Carver, nor any person in their employment has any authority to make or give any representation or warranty whatever in relation to this property

80 High Street
Yarm, TS15 9AH
Tel: 01642 420090
yarm@carvergroup.co.uk

14 Duke Street, Darlington
County Durham, DL3 7AA
Tel: 01325 357807
sales@carvergroup.co.uk

26 Market Place, Richmond
North Yorkshire, DL10 4QG
Tel: 01748 825317
richmond@carvergroup.co.uk

43 Dalton Way, Newton Aycliffe
County Durham, DL5 4DJ
Tel: 01325 320676
aycliffe@carvergroup.co.uk

219 High Street, Northallerton
North Yorkshire, DL7 8LW
Tel: 01609 777710
northallerton@carvergroup.co.uk