



CARVER
RESIDENTIAL
Sales · Lettings · Property Management

Woodlands Way,
Hurworth Place, Darlington, DL2 2HQ
Price £229,000

Bungalow - Dormer Semi
Detached
3 Bedroom/s
1 Bathroom/s

Welcome to this charming property located in the sought-after Woodlands Way, Hurworth Place, Darlington. This delightful Dorma bungalow offers a comfortable living space with Large Lounge, 3 bedrooms, and 1 bathroom, perfect for a family peaceful retreat.

The very private garden is an absolute gem at this property, a tranquil outdoor space for relaxation or entertaining. Imagine enjoying a cup of tea in the morning sun or hosting a barbecue with friends in this lovely setting.

Step inside, and you'll be greeted by a great lounge overlooking the private garden. The updated kitchen provides a modern space to prepare delicious meals for your loved ones.

Located close to the local schools and amenities of Hurworth village and only 10 mins drive (approx) from the town center of Darlington. You'll have easy access to shops, restaurants, and other essentials, making daily life a breeze.

Don't miss the opportunity to make this property your new home. With inviting living spaces, private garden, and ideal location, this property has all the elements for a comfortable lifestyle.

Contact us today to arrange a viewing and experience the charm of Woodlands Way for yourself.





- Popular Hurworth Location
- Large Lounge over looking Garden
- 3 Bedrooms

- Beautiful Private Garden
- Parking for 2 Vehicles
- Kitchen recently updated

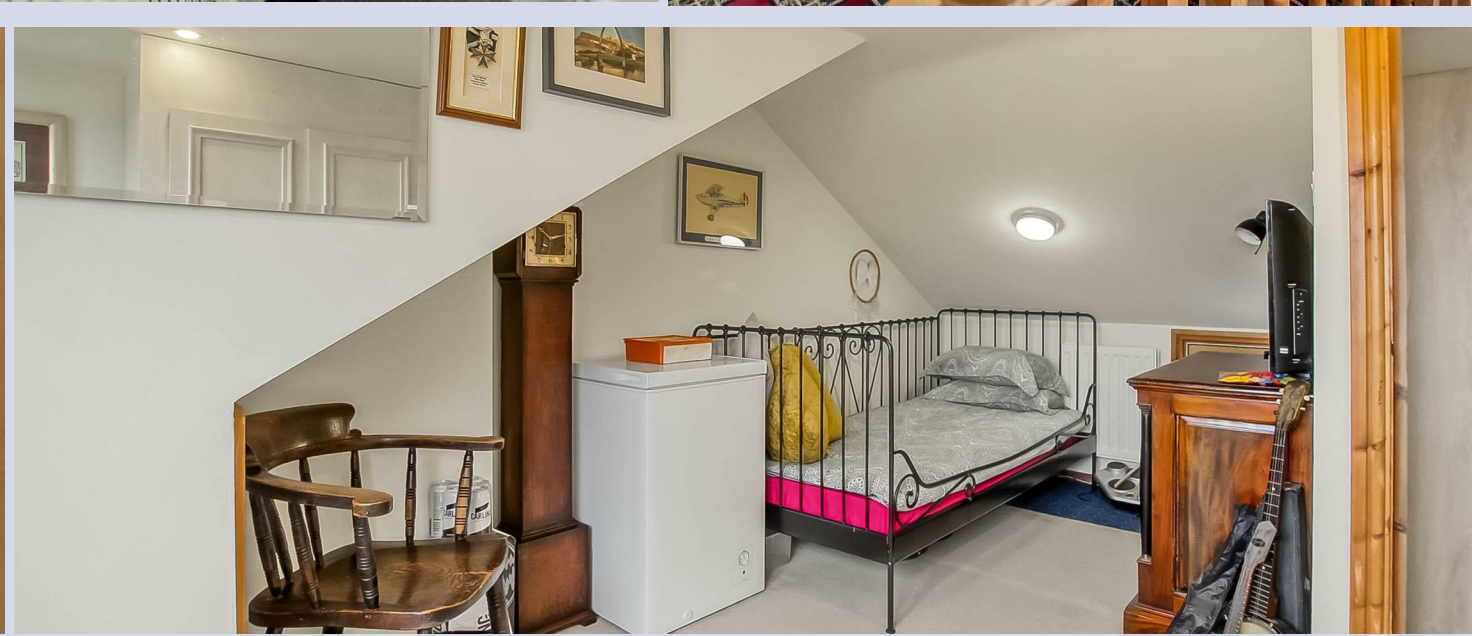
GENERAL INFORMATION:

Tenure: Freehold

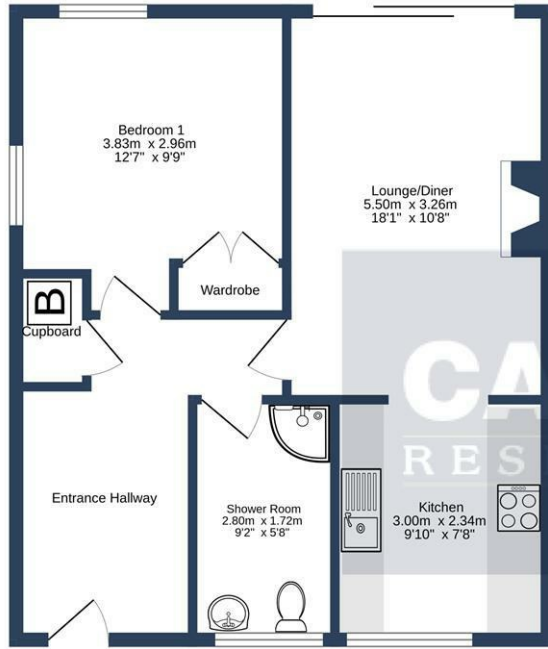
Services: Gas central heating, mains electric, water and drainage.

Double glazing

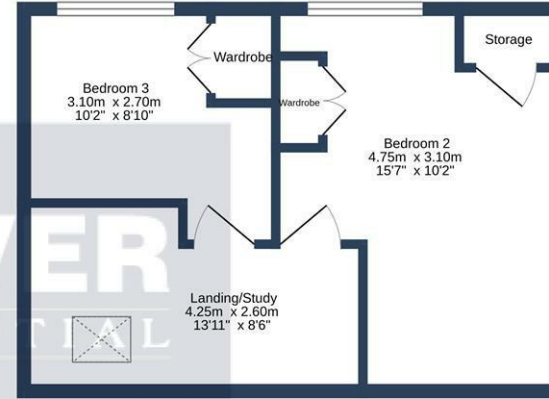
Local Authority: Darlington Borough Council (Tax Banding B)







GROUND FLOOR



1ST FLOOR

WOODLANDS WAY, HURWORTH PLACE, DL2 2HQ.

Whilst every attempt has been made to ensure the accuracy of the floorplan contained here, measurements of doors, windows, rooms and any other items are approximate and no responsibility is taken for any error, omission or mis-statement. This plan is for illustrative purposes only and should be used as such by any prospective purchaser. The services, systems and appliances shown have not been tested and no guarantee as to their operability or efficiency can be given.
Made with Metropix ©2024

Energy Efficiency Rating		Current	Potential
Very energy efficient - lower running costs			
81-91	A		82
69-80	B		
55-68	C		68
49-54	D		
35-48	E		
21-34	F		
1-20	G		
Not energy efficient - higher running costs			
England & Wales			EU Directive 2002/91/EC

We can search 1,000s of mortgages for you

It could take just 15 minutes with one of our specialist advisers:
Call: 01325 380088. Visit: Any of our Offices. Online: www.mortgageadvicebureau.com/carver



Your home may be repossessed if you do not keep up repayments on your mortgage. There will be a fee for mortgage advice. The actual amount you pay will depend upon your circumstances. The fee is up to 1% but a typical fee is 0.3% of the amount borrowed

MAB 6202



These particulars do not constitute any part of an offer or contract. None of the statements contained in these particulars are to be relied on as statements or representations of fact and any intending purchaser must satisfy himself by inspection or otherwise to the correctness of each of the statements contained in these particulars. The vendor does not make or give, and neither Nick & Gordon Carver Residential or Commercial, Nick & Gordon Carver, nor any person in their employment has any authority to make or give any representation or warranty whatever in relation to this property

naea
propertymark

PROTECTED



14 Duke Street, Darlington
Co Durham, DL3 7AA
01325 357807
sales@carvergroup.co.uk

43 Dalton Way, Newton Aycliffe
Co Durham DL5 4DJ
01325 320676
aycliffe@carvergroup.co.uk

41 Market Place, Richmond
North Yorkshire, DL10 4QL
01748 825317
richmond@carvergroup.co.uk

219 High Street, Northallerton
North Yorkshire DL7 8LW
01609 777710
northallerton@carvergroup.co.uk

www.carvergroup.co.uk