



**CARVER**  
RESIDENTIAL  
Sales · Lettings · Property Management

Foxglove Close,  
Newton Aycliffe, DL5 4PF

**Offers in the region of £279,950**

House - Detached  
4 Bedroom/s  
2 Bathroom/s

This DETACHED family home is a true gem waiting to be discovered. Boasting three reception rooms, including a spacious living room, a delightful bay-windowed dining room, and a bright garden room extension, this property offers ample space for entertaining guests or simply relaxing with your loved ones.

With four inviting bedrooms, an en-suite shower room/WC, this home provides comfort and privacy for the whole family. The modern fitted kitchen/breakfast room is perfect for whipping up delicious meals, while the useful utility room and ground floor WC add convenience to everyday living.

Step outside to find an attractive child-friendly rear garden, ideal for enjoying a morning coffee or hosting summer barbecues. Parking will never be an issue with a block paved driveway providing parking for up to three vehicles with a detached double garage.

This property exudes a contemporary charm that is sure to impress.

Don't miss the opportunity to make this stunning property yours and start creating unforgettable memories in this wonderful abode.





- Beautiful double-fronted detached family home
- Garden room extension
- Utility room
- Family bathroom/WC with modern white suite
- Detached double garage
- Living room and bay-windowed dining room
- Modern fitted kitchen/breakfast room
- En-suite shower room/WC with modern white suite
- Block paved driveway
- Attractive enclosed rear gardens

**Agents Notes**

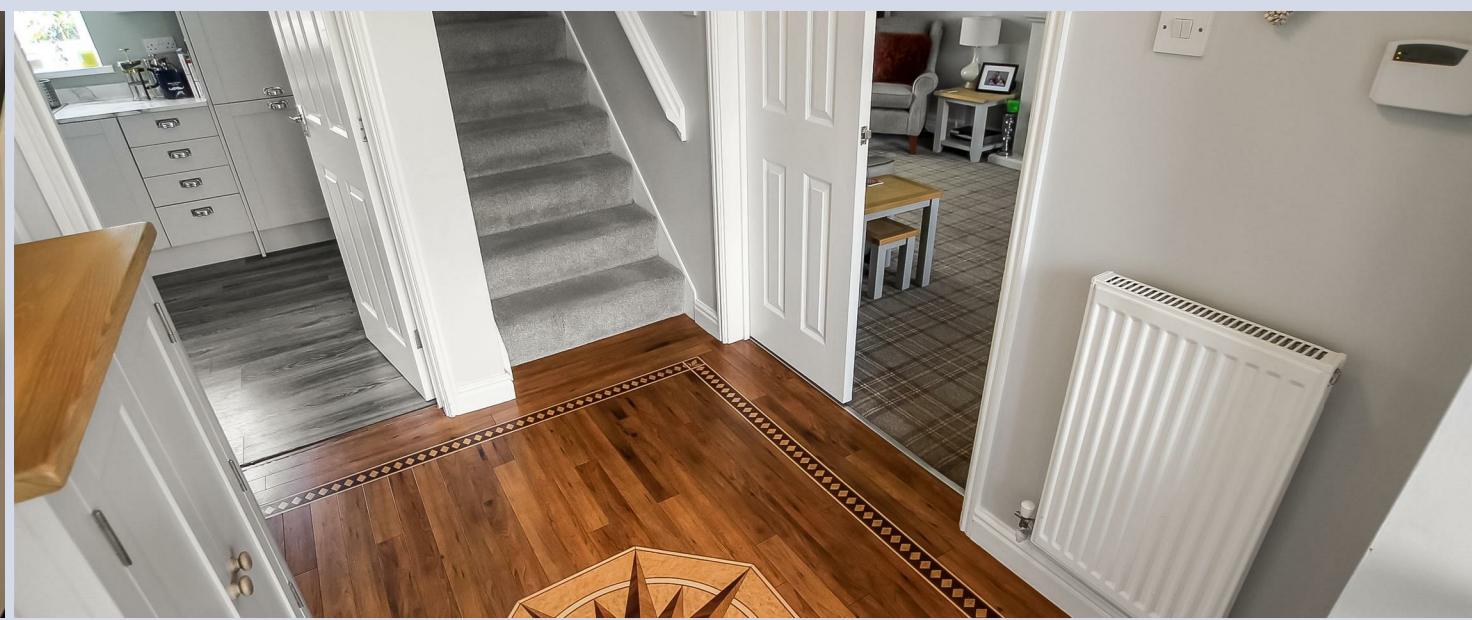
Tenure:- Freehold

Mains gas, (central heating to radiators), electricity & drainage

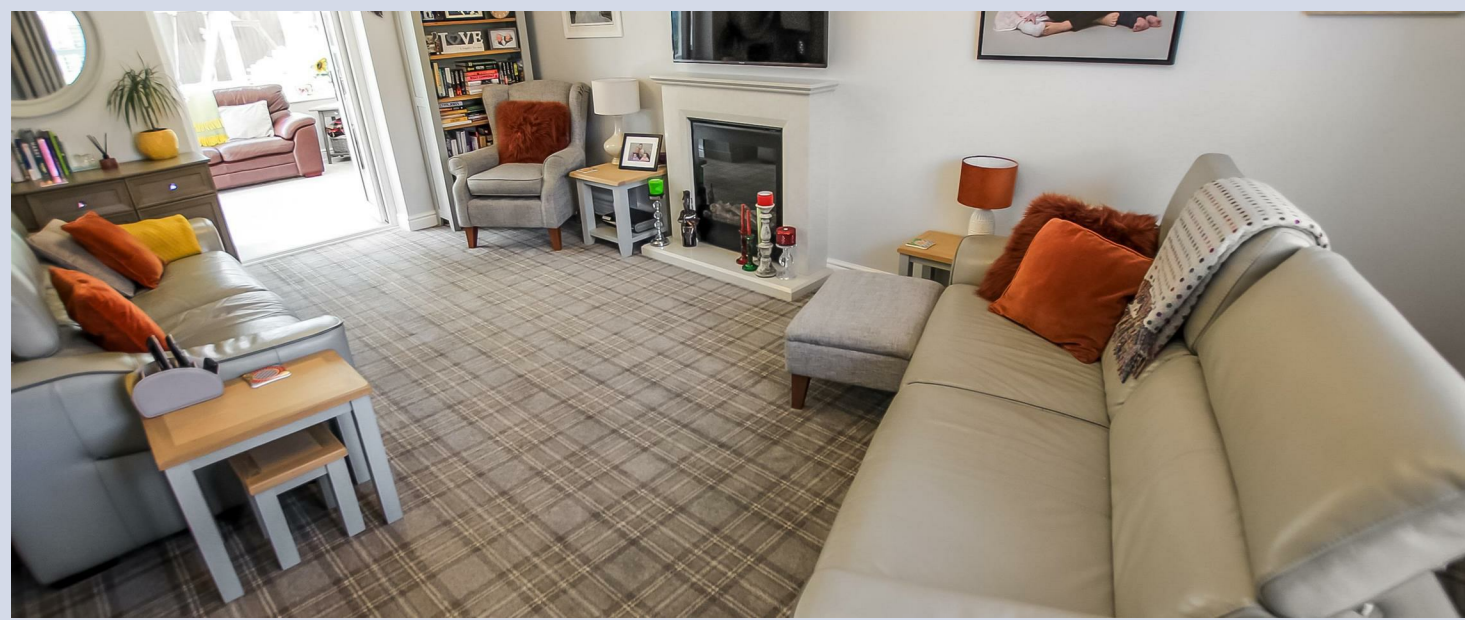
uPVC double glazing throughout

Council Tax:- Band E

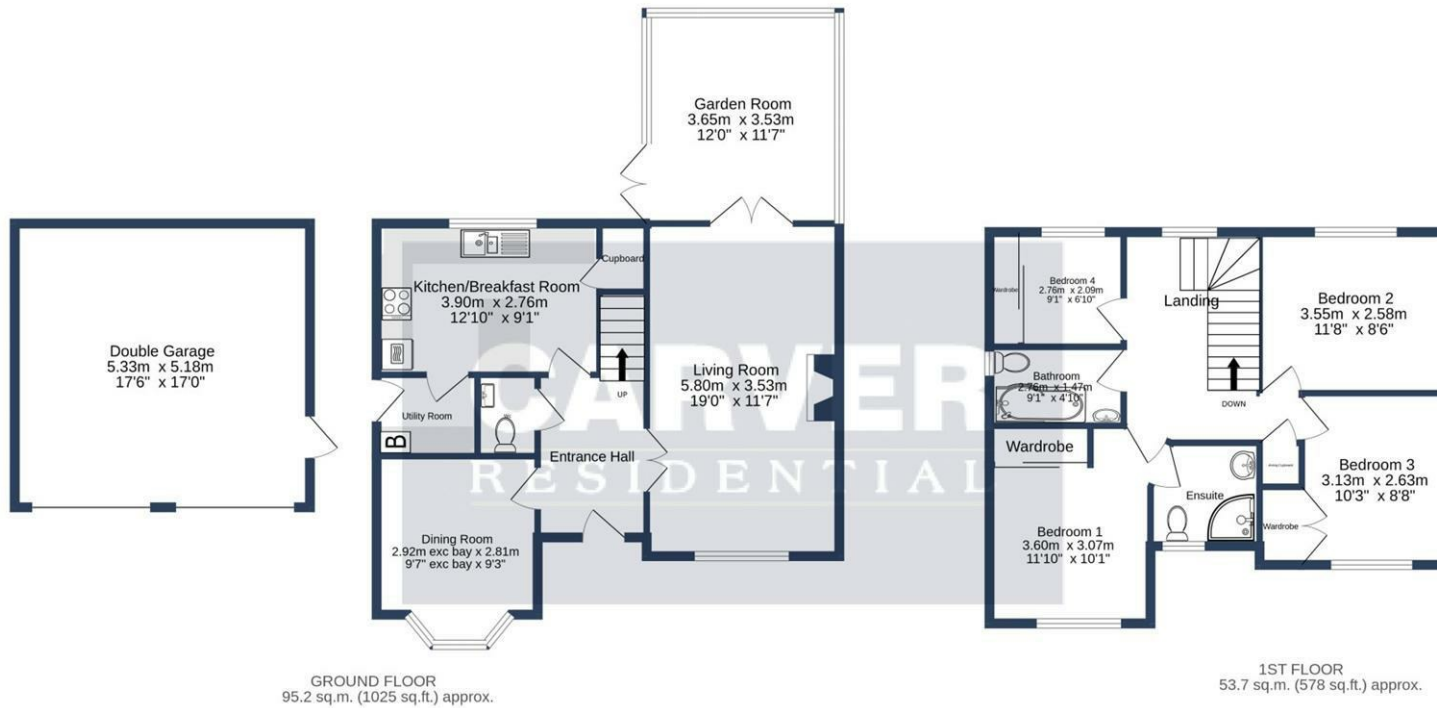
Local Authority:- Durham County Council











Energy Efficiency Rating		Current	Possible
Very energy efficient - lower running costs			
(92 plus) A			
(81-91) B			
(69-80) C			
(55-68) D			
(39-54) E			
(21-38) F			
(1-20) G			
Not energy efficient - higher running costs			
England & Wales		67	78
		EU Directive 2002/91/EC	

FOXGLOVE CLOSE, NEWTON AYCLIFFE. DL5 4PF.

TOTAL FLOOR AREA : 148.9 sq.m. (1602 sq.ft.) approx.

Whilst every attempt has been made to ensure the accuracy of the floorplan contained here, measurements of doors, windows, rooms and any other items are approximate and no responsibility is taken for any error, omission or mis-statement. This plan is for illustrative purposes only and should be used as such by any prospective purchaser. The services, systems and appliances shown have not been tested and no guarantee as to their operability or efficiency can be given.  
Made with Metropix ©2024

We can search 1,000s of mortgages for you

It could take just 15 minutes with one of our specialist advisers:  
Call: 01325 380088. Visit: Any of our Offices. Online: [www.mortgageadvicebureau.com/carver](http://www.mortgageadvicebureau.com/carver)



Your home may be repossessed if you do not keep up repayments on your mortgage. There will be a fee for mortgage advice. The actual amount you pay will depend upon your circumstances. The fee is up to 1% but a typical fee is 0.3% of the amount borrowed

MAB 6202



These particulars do not constitute any part of an offer or contract. None of the statements contained in these particulars are to be relied on as statements or representations of fact and any intending purchaser must satisfy himself by inspection or otherwise to the correctness of each of the statements contained in these particulars. The vendor does not make or give, and neither Nick & Gordon Carver Residential or Commercial, Nick & Gordon Carver, nor any person in their employment has any authority to make or give any representation or warranty whatever in relation to this property



14 Duke Street, Darlington  
County Durham, DL3 7AA  
Tel: 01325 357807  
[sales@carvergroup.co.uk](mailto:sales@carvergroup.co.uk)

26 Market Place, Richmond  
North Yorkshire, DL10 4QG  
Tel: 01748 825317  
[richmond@carvergroup.co.uk](mailto:richmond@carvergroup.co.uk)

43 Dalton Way, Newton Aycliffe  
County Durham, DL5 4DJ  
Tel: 01325 320676  
[aycliffe@carvergroup.co.uk](mailto:aycliffe@carvergroup.co.uk)

219 High Street, Northallerton  
North Yorkshire, DL7 8LW  
Tel: 01609 777710  
[northallerton@carvergroup.co.uk](mailto:northallerton@carvergroup.co.uk)

[www.carvergroup.co.uk](http://www.carvergroup.co.uk)