



**CARVER**  
RESIDENTIAL  
Sales · Lettings · Property Management

Weavers Green  
Northallerton, DL7 8FL

**Offers in the region of £124,950**

Apartment  
2 Bedroom/s  
1 Bathroom/s



A spacious two bedroomed 2nd floor apartment situated within a purpose built block and in a popular residential location. The property benefits from gas fired central heating and Upvc double glazing. The accommodation which would benefit from some cosmetic updating includes a reception hall, spacious living room / dining room and kitchen with wall and base units together with integrated oven and hob. The master bedroom has built in wardrobes and bedroom two is a good sized single room. The bathroom is fitted with a matching suite with shower over the bath. Externally there is an allocated parking space, communal gardens and visitor parking. The property is located within easy reach of the High Street and Railway Station.







- Two bedroomed 2nd floor apartment
- Gas fired central heating and Upvc double glazing
- Master bedroom with built in wardrobes
- Communal gardens
- No onward chain
- Spacious living room / dining room
- Some cosmetic updating required
- Allocated parking space and visitor spaces
- Popular location within walking distance of High Street and Railway Station

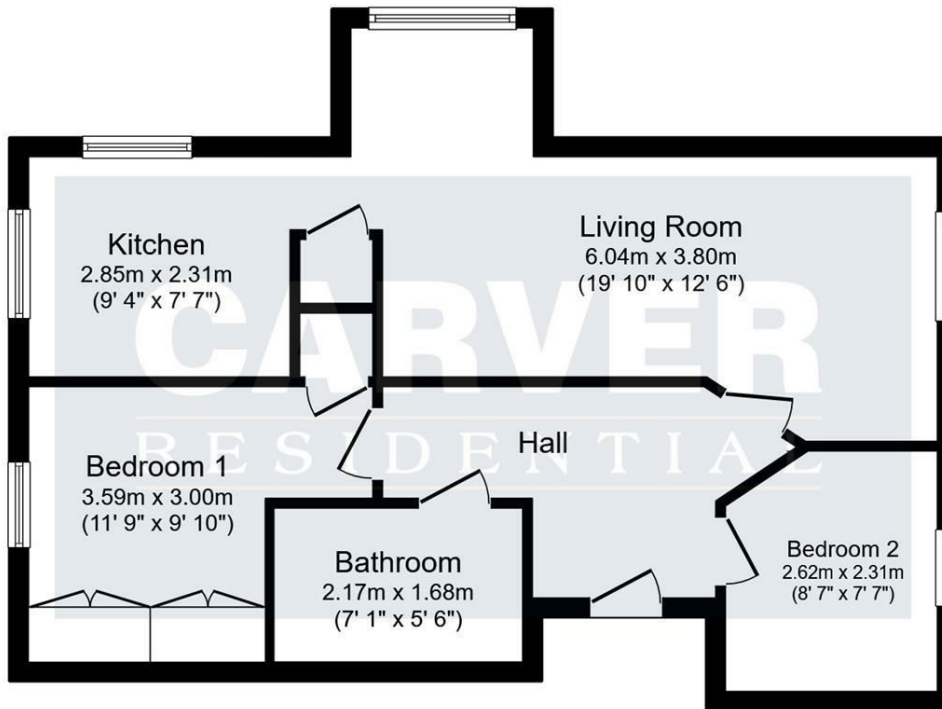
#### GENERAL INFORMATION

Tenure: Leasehold. 125yr lease from 01/06/2000. Ground rent £75 pa. Service charge £1200 pa

Services: Gas central heating, mains electric, water and drainage.

Double glazing.

Local Authority: North Yorkshire Band B



**Floor Plan**  
Floor area 56.4 m<sup>2</sup> (607 sq.ft.)

TOTAL: 56.4 m<sup>2</sup> (607 sq.ft.)

This floor plan is for illustrative purposes only. It is not drawn to scale. Any measurements, floor areas (including any total floor area), openings and orientations are approximate. No details are guaranteed, they cannot be relied upon for any purpose and do not form any part of any agreement. No liability is taken for any error, omission or misstatement. A party must rely upon its own inspection(s). Powered by [www.Propertybox.io](http://www.Propertybox.io)

Energy Efficiency Rating		
	Current	Potential
Very energy efficient - lower running costs		
(92 plus) <b>A</b>		
(81-91) <b>B</b>		
(69-80) <b>C</b>	74	74
(55-68) <b>D</b>		
(39-54) <b>E</b>		
(21-38) <b>F</b>		
(1-20) <b>G</b>		
Not energy efficient - higher running costs		
<b>England &amp; Wales</b>		
	EU Directive 2002/91/EC	

**We can search 1,000s of mortgages for you**

It could take just 15 minutes with one of our specialist advisers:  
Call: 01325 380088. Visit: Any of our Offices. Online: [www.mortgageadvicebureau.com/carver](http://www.mortgageadvicebureau.com/carver)



Your home may be repossessed if you do not keep up repayments on your mortgage. There will be a fee for mortgage advice. The actual amount you pay will depend upon your circumstances. The fee is up to 1% but a typical fee is 0.3% of the amount borrowed

MAB 6202



These particulars do not constitute any part of an offer or contract. None of the statements contained in these particulars are to be relied on as statements or representations of fact and any intending purchaser must satisfy himself by inspection or otherwise to the correctness of each of the statements contained in these particulars. The vendor does not make or give, and neither Nick & Gordon Carver Residential or Commercial, Nick & Gordon Carver, nor any person in their employment has any authority to make or give any representation or warranty whatever in relation to this property



14 Duke Street, Darlington  
County Durham, DL3 7AA  
Tel: 01325 357807  
[sales@carvergroup.co.uk](mailto:sales@carvergroup.co.uk)

26 Market Place, Richmond  
North Yorkshire, DL10 4QG  
Tel: 01748 825317  
[richmond@carvergroup.co.uk](mailto:richmond@carvergroup.co.uk)

43 Dalton Way, Newton Aycliffe  
County Durham, DL5 4DJ  
Tel: 01325 320676  
[aycliffe@carvergroup.co.uk](mailto:aycliffe@carvergroup.co.uk)

219 High Street, Northallerton  
North Yorkshire, DL7 8LW  
Tel: 01609 777710  
[northallerton@carvergroup.co.uk](mailto:northallerton@carvergroup.co.uk)