

Barningham, Richmond DL11 7DU

Offers in the region of £365,000



CARVER

RESIDENTIAL

Sales · Lettings · Property Management

Beautifully situated in this quintessentially English village of around 60 charming stone-built properties, with picturesque village greens and miles of beautiful footpaths you will find Shaw house and The Laurels, neighbouring properties with a huge amount of potential.

Shaw House is a Grade II Listed period cottage requiring some refurbishment. The ground floor provides two reception rooms with beamed ceilings and open fires and a generous kitchen which leads through to a utility room and garage, whilst the first floor provides three bedrooms and family bathroom, the property has recently been cleared and is a beautiful blank canvas which could be updated to suit the new buyers' tastes.

The village is Home to Barningham Park, which is owned by Sir Edward and Lady Natalie Milbank, whose family have owned the surrounding 7,000-acre Barningham and Holgate Estate since 1690 and are very much part of the community as a whole. The Estate has its' own Instagram page and an active local community with its Village Hall & WI, St Michael & All Angels church, and wonderful afternoon teas at Coghlan's in Barningham Park Coach house.

Just a few minutes' drive from the A66 making it ideal for travelling with the Historic Market Towns of Barnard Castle and Richmond just 6 & 8 miles away respectively, yet on the edge of moors stretching westwards into Westmorland with beautiful walks and bike rides through the local dales and hills.

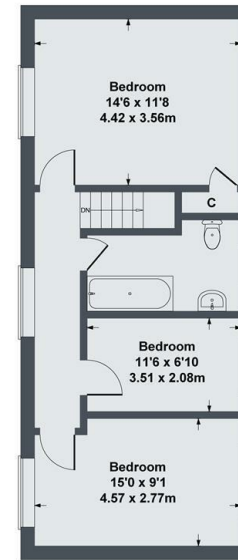
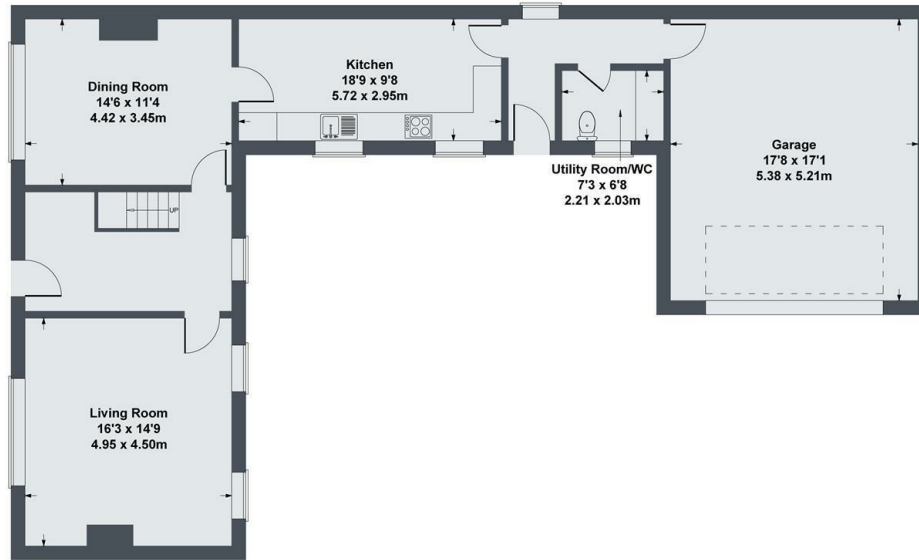
OPEN DAY PLANNED FOR SAT 6TH APRIL 1.30-4PM
-PLEASE REGISTER FOR VIEWINGS.





Shaw House, Barningham

Approximate Gross Internal Area
1735 sq ft - 161 sq m



SKETCH PLAN FOR ILLUSTRATIVE PURPOSES ONLY

All measurements walls, doors, windows, fittings and appliances, their sizes and locations, are approximate only. They cannot be regarded as being a representation by the seller, nor their agent.

Produced by Potterplans Ltd. 2023

